



FREE Artful Connections Videoconference

Lure of the West

Grades 4+

OVERVIEW

Part geography and part mythology, the American West retains a powerful allure in popular culture. Explore depictions of the people, lifestyles, and landscapes of the 19th century West to better understand this dynamic period of history.

After participation in this videoconference, your students will be better able to:

- Understand the period of westward expansion in America during the 1800s;
- Describe the effects of westward expansion on Euro-American settlers' and American Indians' lives;
- Reflect upon and assess artworks depicting westward expansion and the ideals of Manifest Destiny;
- Use visual vocabulary to articulate observations and interpretations of artworks.

HIGHLIGHTED STANDARDS

Historical Thinking

K-12.2: Draw upon the visual data presented in photographs, paintings, cartoons, and architectural drawings to clarify, illustrate, or elaborate upon information presented in the historical narrative, and appreciate and consider past historical perspectives

K-12.3: Analyze and interpret multiple perspectives in history to compare and contrast differing sets of ideas, values, personalities, behaviors, and institutions, and to challenge arguments of historical inevitability

K-12.4: Obtain and interrogate historical data from a variety of sources, including library and museum collections, in order to formulate historical questions from encounters with art and other records from the past

US History

K-4.1: Living and Working Together in Families and Communities, Now and Long Ago

K-4.3: The History of the United States: Democratic Principles and Values and the Peoples from Many Cultures Who Contributed to Its Cultural, Economic, and Political Heritage

5-12, Era 4: Expansion and Reform (1801-1861)

KEY CONCEPTS

expansionism, expedition, frontier, Gold Rush, homestead, immigration, Louisiana Purchase, Manifest Destiny, migration, speculate, survey, territory, treaty

To request this **FREE** program, visit CILC.org or contact Rebecca Fulcher at FulcherR@si.edu. More information and a full list of standards are at AmericanArt.si.edu/education/video/.

RELATED ARTWORKS

Many artworks in our collection support this videoconference. A representative sample appears below. Please note that images used during your videoconference may vary.



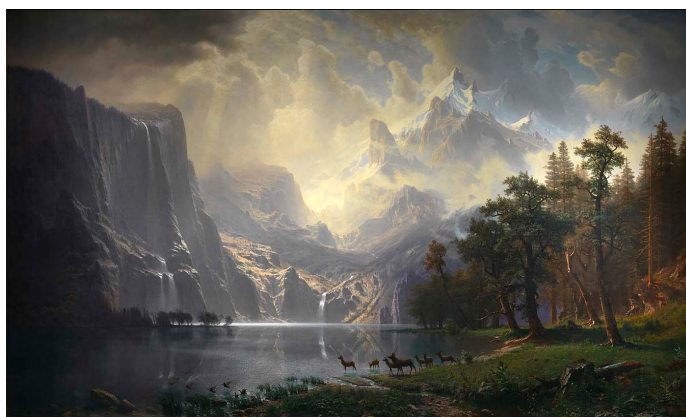
Thomas Moran, [*The Grand Canyon of the Yellowstone*](#), 1872, oil on canvas mounted on aluminum, 84 x 144 1/4 in., Lent by the Department of the Interior Museum, L.1968.84.1.



Emanuel Gottlieb Leutze, [*Westward the Course of Empire Takes Its Way \(mural study, U.S. Capitol\)*](#), 1861, oil on canvas, 33 1/4 x 43 3/8 in., Bequest of Sara Carr Upton, 1931.6.1.



Charles Christian Nahl & August Wenderoth, [*Miners in the Sierras*](#) [Detail], 1851-1852, oil on canvas mounted on canvas, 54 1/4 x 66 7/8 in., Gift of the Fred Heilbron Collection, 1982.120.



Albert Bierstadt, [*Among the Sierra Nevada, California*](#), 1868, oil on canvas, overall: 72 x 120 1/8 in., Bequest of Helen Huntington Hull, granddaughter of William Brown Dinsmore, who acquired the painting in 1873 for "The Locusts," the family estate in Dutchess County, New York, 1977.107.1.

ADDITIONAL ARTWORKS

Bryant Baker, [*Pioneer Woman*](#), modeled 1927, cast 1968, bronze, 32 x 15 x 16 1/8 in., Gift of the artist, 1968.126.

Timothy H. O'Sullivan, [*Cañon de Chelle. Walls of the Grand Cañon about 1200 Feet in Height*](#), 1873, albumen silver print, 8 x 10 7/8 in., Museum purchase from the Charles Isaacs Collection made possible in part by the Luisita L. and Franz H. Denghausen Endowment, 1994.91.134.

Have questions about *Artful Connections* videoconferences?
Visit our [Frequently Asked Questions](#) webpage.