



# Smithsonian American Art Museum

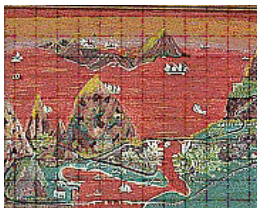
## *Earl Cunningham's America*

Aug. 10—Nov. 4, 2007

### Checklist



1. Earl Cunningham  
*Great White Heron-- Seminole Village*  
n.d.  
oil on fiberboard  
18 x 24 in.  
Orange County, Florida's Arts and Cultural Affairs Office



2. Earl Cunningham  
*The Red Sea*  
n.d.  
oil on fiberboard  
20 x 23 1/2 in. (50.8 x 59.7 cm)  
26 1/2 x 30 1/4 in.  
Collection of Mr. and Mrs. Rick Appelquist



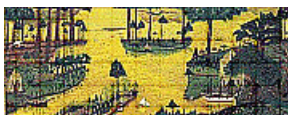
3. Earl Cunningham  
*Gathering Clouds Off Little River Inlet*  
1962  
oil on fiberboard  
20 x 24 in. (50.8 x 61 cm)  
26 3/4 x 30 3/4 in.  
Collection of Marilyn L. and Michael A. Mennello



4. Earl Cunningham  
*A Winter Outing*  
ca. 1930  
oil on fiberboard  
17 x 48 in. (43.2 x 121.9 cm)  
Collection of Marilyn L. and Michael A. Mennello



5. Earl Cunningham  
*Sunrise at Pine Point Maine*  
ca. 1950  
oil on fiberboard  
22 1/2 x 42 1/2 in. (57.2 x 108 cm)  
34 3/4 x 55 in. (double deep frame)  
Collection of Mr. Ross L. Silverbach



6. Earl Cunningham  
*Nassau Sound*  
ca. 1945  
oil on fiberboard  
19 x 48 in. (48.3 x 121.9 cm)  
30 1/2 x 60 1/2 in.  
Collection of Mrs. Sylvia Overby

## Smithsonian American Art Museum

*Earl Cunningham's America*

Aug. 10—Nov. 4, 2007

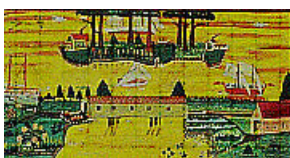
### Checklist



7. Earl Cunningham  
*Red Sky Over Folly Beach, S.C.*  
ca. 1975 oil on fiberboard  
31 1/4 x 44 1/2 in. (79.4 x 113 cm)  
Collection of Marilyn L. and Michael A. Mennello



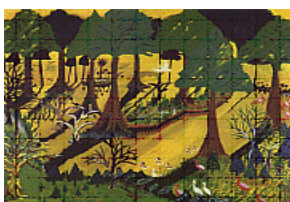
8. Earl Cunningham  
*Untitled*  
n.d.  
oil on fiberboard  
Collection of Mrs. Eva Franchi



9. Earl Cunningham  
*Perfection Island*  
n.d.  
oil on fiberboard  
sight 22 x 42 in.  
26 1/4 x 46 1/4 in.  
Collection of Eddie and Rosalee Kaminsky



10. Earl Cunningham  
*Amusement Park*  
1959  
oil on fiberboard  
24 x 43 in. (61 x 109.2 cm)  
Collection of Anthony A. and Anne Cochran Grey



11. Earl Cunningham  
*Seminole Everglades*  
ca. 1945  
oil on fiberboard  
22 x 26 in. (55.9 x 66 cm)  
Metropolitan Museum of Art, Gift of The Honorable Marilyn L. Mennello and Mr. Michael A. Mennello, 1997; 1997.162



12. Earl Cunningham  
*Hilton Head*  
1938  
oil on fiberboard  
19 1/2 x 23 1/2 in. (39.6 x 59.7 cm)  
Private Collection, Los Angeles



13. Earl Cunningham  
*Lighthouse Cove*  
ca. 1955 -1960  
oil on fiberboard  
22 3/4 x 43 in. (57.8 x 109.2 cm)  
35 3/4 x 55 1/2 in.  
Collection of Judson and Joyce Green

## Smithsonian American Art Museum

*Earl Cunningham's America*

Aug. 10—Nov. 4, 2007

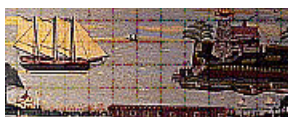
Checklist



14. Earl Cunningham  
*Spoonbill Point*  
ca. 1950  
oil on fiberboard  
22 3/4 x 42 3/4 in. (57.8 x 108.6 cm)  
32 3/4 x 61 in. (double frame)  
Collection of Frederick and Susan Weingeroff



15. Earl Cunningham  
*Safe Harbor--Perkins Cove*  
ca. 1930 oil on fiberboard  
16 x 37 in. (40.6 x 94 cm)  
Private Collection



16. Earl Cunningham  
*Sailing by Old Brick Lighthouse*  
ca. 1960  
oil on fiberboard  
16 x 36 in.  
24 1/4 x 44 in.  
Collection of Sen. Paula Hawkins



17. Earl Cunningham  
*Carolina Canal*  
ca. 1945  
oil on fiberboard  
22 x 28 3/4 in. (55.9 x 73 cm)  
Collection of Dr. and Mrs. William Baker Allen



18. Earl Cunningham  
*Morning Rays Through the Carolina Hills*  
ca. 1938  
oil on fiberboard  
16 x 24 in. (40.6 x 61 cm)  
22 1/2 x 30 1/2 in.  
Collection of Mr. and Mrs. James M. Seneff, Jr.



19. Earl Cunningham  
*Camp David*  
ca. 1940  
oil on fiberboard  
17 1/4 x 24 in. (43.8 x 61 cm)  
National Archives and Records Administration



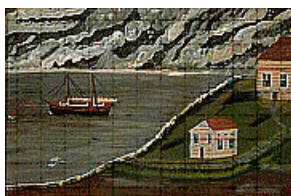
20. Earl Cunningham  
*Summertime at Fort San Marcos*  
ca. 1970  
oil on fiberboard  
16 x 24 in. (40.6 x 61 cm)  
22 1/2 x 30 3/4 in.  
Mennello Museum of American Art, Gift of Michael A. and Marilyn L. Mennello

## Smithsonian American Art Museum

*Earl Cunningham's America*

Aug. 10—Nov. 4, 2007

### Checklist



21. Earl Cunningham

*Icy Harbor*

ca. 1940

oil on fiberboard

21 1/4 x 26 in. (54 x 66 cm)

29 x 37 in.

Mennello Museum of American Art, Gift of Michael A. and Marilyn L. Mennello



22. Earl Cunningham

*Norsemen Discovering the New World*

ca. 1930

oil on fiberboard

18 x 24 in. (45.7 x 61 cm)

Collection of William E. Heyler]



23. Earl Cunningham

*Houseboat on Flamingo Bay*

ca. 1926/1955

oil on fiberboard

15 3/4 x 20 1/4 in. (40 x 50.4 cm)

High Museum of Art, Atlanta, Georgia; Gift of the Honorable Marilyn L. Mennello and Michael A. Mennello; 1992.49



24. Earl Cunningham

*View of Volcano Island*

ca. 1930

oil on fiberboard

15 3/4 x 20 in. (40 x 50.8 cm)

Collection of Marilyn L. and Michael A. Mennello



25. Earl Cunningham

*Summer Day at Over-Fork*

ca. 1955

oil on fiberboard

22 1/2 x 42 in. (57.2 x 106.7 cm)

35 1/4 x 54 3/4 in.

Collection of Lynda Joyce Wilson



26. Earl Cunningham

*Untitled*

n.d.

oil on fiberboard

16 x 24 in. (40.6 x 61 cm)

25 1/2 x 33 7/8 in.

Collection of John and Rita Lowndes



27. Earl Cunningham

*Big Trees Park*

n.d.

oil on fiberboard

16 x 24 in. (40.6 x 61 cm)

Akron Art Museum, Gift of The Honorable Marilyn L. Mennello and Mr. Michael A. Mennello

## Smithsonian American Art Museum

*Earl Cunningham's America*

Aug. 10—Nov. 4, 2007

### Checklist



28. Earl Cunningham  
*The Twenty-One*  
1977  
oil on fiberboard  
17 x 40 3/4 in. (43.2 x 103.5 cm)  
28 1/2 x 52 3/4 in.  
Collection of Marilyn L. and Michael A. Mennello



29. Earl Cunningham  
*Earl's Garden*  
ca. 1960s  
oil on fiberboard  
12 x 24 in. (30.5 x 61 cm)  
Collection of Peter and Cheryl Merolo



30. Earl Cunningham  
*Warm Afternoon at Broad Cove*  
1955  
oil on fiberboard  
17 x 48 in. (43.2 x 121.9 cm)  
29 1/2 x 60 3/8 in.  
Collection of Marilyn L. and Michael A. Mennello



31. Earl Cunningham  
*Busy Day at Frompton Inlet*  
1952  
oil on fiberboard  
16 x 36 in. (40.6 x 91.4 cm)  
Collection of Susan and David Douglass



32. Earl Cunningham  
*Goose Rock Beach, Maine*  
ca. 1960  
oil on fiberboard  
19 3/4 x 35 3/4 in. (50.2 x 90.8 cm)  
26 1/2 x 42 1/4 in. / 31 1/2 x 47 1/2 in.  
Collection of Mr. and Mrs. Walter F. Dowman



33. Earl Cunningham  
*Palm Beach*  
1950  
oil on fiberboard  
19 x 48 3/4 in. (48.3 x 123.8 cm)  
32 1/2 x 61 1/4 in.  
Collection of Marilyn L. and Michael A. Mennello



34. Earl Cunningham  
*Plantation*  
ca. 1955-1965  
oil on fiberboard  
17 x 48 in. (43.2 x 121.9 cm)  
Collection of Peter and Cheryl Merolo

## Smithsonian American Art Museum

*Earl Cunningham's America*

Aug. 10—Nov. 4, 2007

Checklist



35. Earl Cunningham

*Valley Freight Train*

before 1957

oil on fiberboard

16 x 25 1/2 in. (40.6 x 64.8 cm)

Colonial Williamsburg Foundation: Abby Aldrich Rockefeller Folk Art Museum, Gift of the Honorable Marilyn L. Mennello and Michael A. Mennello



36. Earl Cunningham

*Island Farm*

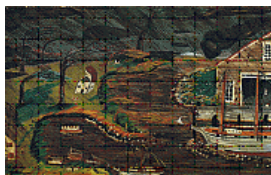
1935

oil on fiberboard

21 1/4 x 26 in. (54 x 66 cm)

26 1/2 x 31 in.

Collection of Marilyn L. and Michael A. Mennello



37. Earl Cunningham

*The Big Storm*

1970

oil on fiberboard

16 x 24 in. (40.6 x 61 cm)

22 1/2 x 30 3/4 in.

Mennello Museum of American Art, Gift of Michael A. and Marilyn L. Mennello



38. Earl Cunningham

*Hurricane*

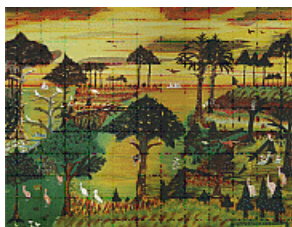
ca. 1970

oil on fiberboard

22 3/4 x 42 in. (57.8 x 106.7 cm)

22 1/2 x 30 3/4 in.

Museum of Arts and Sciences, Daytona Beach, Gift of Kenneth Worcester Dow and Mary Mohan Dow



39. Earl Cunningham

*Sanctuary*

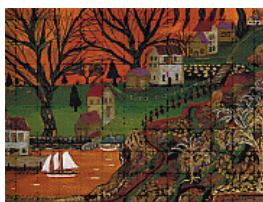
ca. 1934

oil on fiberboard

21 1/4 x 26 in. (54 x 66 cm)

27 x 30 5/8 in.

Mennello Museum of American Art, Gift of Michael A. and Marilyn L. Mennello



40. Earl Cunningham

*New England Autumn*

1928

oil on fiberboard

16 x 20 in. (40.6 x 50.8 cm)

21 x 24 3/4 in.

Collection of Marilyn L. and Michael A. Mennello

## Smithsonian American Art Museum

*Earl Cunningham's America*

Aug. 10—Nov. 4, 2007

Checklist



41. Earl Cunningham  
*Warehouse at Hokona Settlement*  
ca. 1950  
oil on fiberboard  
20 x 47 3/4 in. (50.8 x 121.3 cm)  
Collection of Marilyn L. and Michael A. Mennello



42. Earl Cunningham  
*Blue Sail Fleet Returns*  
after 1949  
oil on fiberboard  
16 1/2 x 36 1/4 in. (41.9 x 92.1 cm)  
Smithsonian American Art Museum, Gift of Mr. and Mrs.  
Michael Mennello, 1988.64



43. Earl Cunningham  
*Seminole Indian Summer Camp*  
ca. 1963  
oil on fiberboard  
16 7/8 x 40 3/4 in. (42.9 x 103.5 cm.)  
Smithsonian American Art Museum, Gift of Michael and  
Marilyn Mennello, 1992.39



44. Earl Cunningham  
*Seminole Village, Deep in the Everglades*  
ca. 1965  
oil on fiberboard  
20 3/4 x 26 3/4 in. (52.7 x 67.9 cm)  
30 1/4 x 36 1/2 in.  
Mennello Museum of American Art, Gift of Michael A. and  
Marilyn L. Mennello

**Image not available**

45. Earl Cunningham  
*Untitled*  
n.d.  
oil on fiberboard  
14 x 23 5/8 in. (35.6 x 59.9 cm)  
20 5/8 x 30 in.  
Collection of Orlando Museum of Art, Gift of Mary  
Pennington Sefton



46. Earl Cunningham  
*The Everglades*  
ca. 1950  
oil on fiberboard  
32 1/2 x 60 3/4 in. (82.6 x 154.3 cm)  
John F. Kennedy Presidential Library and Museum



47. Earl Cunningham  
*Seminole Village with Lavender Sky*  
n.d.  
oil on fiberboard  
17 x 41 in. (43.2 x 104.1 cm)  
The Lightner Museum

## Smithsonian American Art Museum

*Earl Cunningham's America*

Aug. 10—Nov. 4, 2007

Checklist



48. Earl Cunningham  
*Imaginary Harbor, St. Augustine*  
n.d.  
oil on fiberboard  
30 x 36 in. (76.2 x 91.4 cm)  
28 1/2 x 41 in. (maybe reframed)  
Private Collection



49. Earl Cunningham  
*Ship Chandlerly with Angel*  
ca. 1976  
housepaint or tempera on masonite  
24 x 46 in. (61 x 116.8 cm)  
Collection American Folk Art Museum, New York; Gift of  
Theresia Paffe 1979.10.001

**Image not available**

50. Earl Cunningham  
*Seaside Life*  
1950  
oil on fiberboard  
20 x 48 in. (50.8 x 121.9 cm)  
27 1/2 x 54 in.  
Sam and Robbie Vickers Florida Collection