



Smithsonian American Art Museum

Accommodating Nature: The Photographs of Frank Gohlke

Dec. 5, 2008—March 1, 2009

Checklist

1. *Hillsboro, Texas 1978*
Gelatin silver print, 30 x 40 inches
Collection of the artist



2. *Wenonah and Kessler Boulevards #1, Wichita Falls, Texas 1972*
Gelatin silver print, 14 x 11 inches
Collection of the artist



3. *Looking down Kessler Boulevard. Wichita Falls, Texas 1972*
Gelatin silver print, 14 x 11 inches
Collection of the artist



4. *Corrugated shed, Wichita Falls, Texas 1972*
Gelatin silver print, 14 x 11 inches
Collection of the artist



5. *Front door of 2201 Wenonah, where I grew up, Wichita Falls, Texas 1978*
Gelatin silver print, 16 x 20 inches
Collection of the artist



6. *The backyard of my parents' home, 2201 Wenonah, Wichita Falls, Texas 1984*
Gelatin silver print, 16 x 20 inches
Amon Carter Museum, Fort Worth, Texas, Gift of the Texas Historical Foundation with support from a major grant from the DuPont Company and Conoco, its energy subsidiary, and assistance from the Texas Commission on the Arts and the National Endowment for the Arts



7. *Art deco house, corner of Lebanon and Kessler, Wichita Falls, Texas, November 1982*
Gelatin silver print, 11 x 14 inches
Collection of the artist



8. *House at 609 Fillmore Street, a style sometimes designated "airplane bungalow," Wichita Falls, Texas, October 1982*
Gelatin silver print, 11 x 14 inches
Collection of the artist



9. *Heat and shade, 3200 block of Milby Avenue, Wichita Falls, Texas 1981*
Gelatin silver print, 16 x 20 inches
Collection of the artist

10. *Ross family ranch house, near Jolly, Texas, where my mother spent part of her childhood (1919-1924), 1984*
Gelatin silver print, 16 x 20 inches
Amon Carter Museum, Fort Worth, Texas, Gift of the Texas Historical Foundation with support from a major grant from the DuPont Company and Conoco, its energy subsidiary, and assistance from the Texas Commission on the Arts and the National Endowment for the Arts

11. *Ross family ranch house after fire, looking east and southwest, Clay County, near Jolly, Texas 1995*
Gelatin silver prints, 16 x 20 inches
Collection of the artist

12. *Storm cellar behind the (vanished) foreman's house, Ross family ranch, near Jolly, Texas 1984*
Gelatin silver print, 16 x 20 inches
Amon Carter Museum, Fort Worth, Texas, Gift of the Texas Historical Foundation with support from a major grant from the DuPont Company and Conoco, its energy subsidiary, and assistance from the Texas Commission on the Arts and the National Endowment for the Arts

13. *Ross ranch house, Clay County, North Texas 1972*
Gelatin silver print, 20 x 16 inches
Collection of the artist

14. *My mother and daughter Jessica in the vacant lot, Wichita Falls, Texas 1972*
Gelatin silver print, 14 x 11 inches
Collection of the artist

15. *My dad burning trash, Edmond, Oklahoma 1975*
Gelatin silver print, 14 x 11 inches
Collection of the artist

16. *Minneapolis (radio tower) 1972*
Gelatin silver print, 10 x 8 inches
Collection of the artist

17. *Minneapolis (corner store) 1972*
Gelatin silver print, 10 x 8 inches
Collection of the artist



18. *Painted wall, St. Paul, Minnesota 1972*
Gelatin silver print, 14 x 11 inches
Collection of the artist



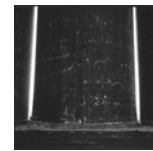
19. *Steel elevator, near Ropesville, Texas 1975*
Gelatin silver print, 20 x 16 inches
Collection of the artist



20. *Covered trailer, Minneapolis, Minnesota 1972*
Gelatin silver print, 14 x 11 inches
Collection of the artist



21. *Grain elevator, Minneapolis 1972*
Gelatin silver print, 14 x 11 inches
Amon Carter Museum, Fort Worth, Texas



22. *Grain elevator and tree, Midway area, Minneapolis, Minnesota 1973*
Gelatin silver print, 20 x 16 inches
Collection of the artist



23. *Building in the shadow of a grain elevator, Cashion, Oklahoma 1973*
Gelatin silver print, 14 x 11 inches
Collection of the artist



24. *Grain elevator, near Kinsley, Kansas 1973*
Gelatin silver print, 20 x 16 inches
Collection of the artist



25. *View south from Harmon-Toles elevator, Happy, Texas 1975*
Gelatin silver print, 20 x 16 inches
Collection of the artist



26. *View north from Harmon-Toles elevator, Happy, Texas 1975*
Gelatin silver print, 20 x 16 inches
Collection of the artist



27. *View east from Harmon-Toles elevator, Happy, Texas 1975*
Gelatin silver print, 20 x 16 inches
Collection of the artist



28. *View west from Harmon-Toles elevator, Happy, Texas 1975*
Gelatin silver print, 20 x 16 inches
Collection of the artist



29. *Grain elevator and lightning flash, Lamesa, Texas 1975*
Gelatin silver print, 20 x 16 inches
Amon Carter Museum, Fort Worth, Texas



30. *Marsh fire (2), Bolivar Peninsula, Texas 1978*
Gelatin silver print, 16 x 20 inches
Collection of the artist



31. *Flood debris in trees, near Comfort, Texas 1978*
Gelatin silver print, 16 x 20 inches
Collection of the artist



32. *Cornfield and thunderstorm, near Earth, Texas 1975*
Gelatin silver print, 20 x 16 inches
Collection of the artist



33. *Edge of thunderstorm, looking south near Dean, Texas 1982*
Gelatin silver print, 16 x 20 inches
Amon Carter Museum, Fort Worth, Texas, Gift of the Texas Historical Foundation
with support from a major grant from the DuPont Company and Conoco, its energy
subsidiary, and assistance from the Texas Commission on the Arts and the National
Endowment for the Arts



34. *Landscape with birds flying, near Fort Worth, Texas 1978*
Gelatin silver print, 16 x 20 inches
Collection of the artist



35. *Landscape, Albuquerque, New Mexico 1973*
Gelatin silver print, 14 x 11 inches
Amon Carter Museum, Fort Worth, Texas



36. *Landscape, Albuquerque, New Mexico 1974*
Gelatin silver print, 20 x 16 inches
Collection of the artist



37. *Badminton net at Naniboujou Lodge near Grand Marais, Minnesota 1977*
Gelatin silver print, 11 x 14 inches
Collection of the artist



38. *House on the outskirts of Moorhead, Minnesota 1977*
Gelatin silver print, 16 x 20 inches
Collection of the artist



39. *Aftermath: The Wichita Falls Tornado, 4503 McNeil, looking north, April 14, 1979/June 1980*
Gelatin silver prints, 16 x 20 inches
Collection of the artist



40. *Aftermath: The Wichita Falls Tornado, Maplewood Avenue, near Sikes Senter Mall, looking northeast, April 14, 1979/June 1980*
Gelatin silver prints, 16 x 20 inches
Collection of the artist



41. *Aftermath: The Wichita Falls Tornado, View of Faith Village from Kiwanis Park, looking east, April 15, 1979/June 1980*
Gelatin silver prints, 16 x 20 inches
Collection of the artist



42. *Aftermath: The Wichita Falls Tornado, Northwest corner of Fairway Avenue and Southwest Parkway, looking northwest, April 15, 1979/June 1980*
Gelatin silver prints, 16 x 20 inches
Collection of the artist



43. *Aftermath: The Wichita Falls Tornado, 4679 University, looking west, April 15, 1979/June 1980*
Gelatin silver prints, 16 x 20 inches
Collection of the artist



44. *Aftermath: The Wichita Falls Tornado, Southwest Parkway, near Fairway, looking west, April 15, 1979/June 1980*
Gelatin silver prints, 16 x 20 inches
Collection of the artist



45. *Aftermath: The Wichita Falls Tornado, 1600 block Aldrich Avenue, looking east, April 14, 1979/June 1980*
Gelatin silver prints, 16 x 20 inches
Collection of the artist



46. *Aftermath: The Wichita Falls Tornado, Southmoor Manor Apartments, looking north, April 14, 1979/June 1980*
Gelatin silver prints, 16 x 20 inches
Collection of the artist



47. *Blowdown at Ryan Lake, twelve miles north of Mount St. Helens, Washington 1982*
Gelatin silver prints, 13 x 40 inches
Collection of the artist



48. *Logging in a stand of dead trees, sixteen miles northwest of Mount St. Helens, Washington 1981*
Gelatin silver print, 20 x 24 inches
Collection of the artist



49. *Visitors on rim of Mount St. Helens, Washington 1990*
Gelatin silver prints, 20 x 24 inches
Collection of the artist



50. *Ten minutes later 1990 [after an earthquake and landslide several hundred feet below]*
Gelatin silver prints, 20 x 24 inches
Collection of the artist



51. *View of Mount St. Helens from vicinity of Spud Mountain, six miles west of Mount St. Helens, Washington 1982*
Gelatin silver print, 37 x 44 inches
Collection of the artist



52. *Aerial view: looking south at Mount St. Helens crater and lava dome, Mount Hood and Mount Jefferson in the distance, airplane in the crater 1982*
Gelatin silver print, 37 x 44 inches
Collection of the artist



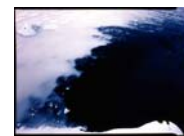
53. *Confluence of Pine Creek and Lewis River, thirteen miles southeast of Mount St. Helens, Washington 1981, 1982, 1983, 1984, 1990*
Gelatin silver prints, 7 x 24 inches
Collection of the artist



54. *View from inside Mount St. Helens crater, looking north toward Mount Rainier fifty miles distant 1983*
Gelatin silver print, 13 x 40 inches
Collection of the artist



55. *Aerial view: looking southeast over Windy Ridge and visitors parking lot, 4.5 miles northeast of Mount St. Helens, Washington 1983*
Gelatin silver prints, 20 x 24 inches
Collection of the artist
56. *Rock and moss, the Sudbury River, Ashland, Massachusetts, July 1991*
Chromogenic development print, 42 x 54 inches
Collection of the artist
57. *Chemical Brook enters the Sudbury River, Ashland, Massachusetts, December 1991*
Chromogenic development print, 42 x 54 inches
Collection of the artist
58. *Reservoir #2, the Sudbury River, Framingham, Massachusetts, October 1991*
Chromogenic development print, 42 x 54 inches
Collection of the artist
59. *The Sudbury River (Fruit Street Bridge), Hopkinton, Massachusetts, October 1990*
Chromogenic development print, 42 x 54 inches
Collection of the artist
60. *Tire, the Sudbury River, Framingham, Massachusetts, September 1991*
Chromogenic development print, 42 x 54 inches
Collection of the artist
61. *The Sudbury River, Ashland, Massachusetts, December 1992*
Chromogenic development print, 42 x 54 inches
Collection of the artist
62. *Nyanza toxic waste site, above the Sudbury River, Ashland, Massachusetts, May 1990*
Chromogenic development print, 42 x 54 inches
Collection of the artist
63. *Reservoir #1, the Sudbury River, Framingham, Massachusetts, September 1991*
Chromogenic development print, 42 x 54 inches
Collection of the artist
64. *Eddy, the Sudbury River, Hopkinton, Massachusetts, October 1990*
Chromogenic development print, 42 x 54 inches
Collection of the artist
65. *A woman watering her garden, near Kirkville, Mississippi 1986*
Chromogenic development print, 16 x 20 inches
Collection of the artist



66. *Green field with trees, southwest Tennessee 1986*
Chromogenic development print, 16 x 20 inches
Collection of the artist



67. *Stagnant water, Pierre Part, Louisiana 1987*
Chromogenic development print, 16 x 20 inches
Collection of the artist



68. *Wisteria vines on a cedar tree, Pierre Part, Louisiana 1987*
Chromogenic development print, 16 x 20 inches
Collection of the artist



69. *Breezedale, Rocky River, Ohio 1997*
Gelatin silver print, 30 x 40 inches
Collection of the artist



70. *Gwinn Estate, Bratenahl, Ohio 1997*
Gelatin silver print, 30 x 40 inches
Collection of the artist



71. *Small plane landing at downtown airport, Cleveland, Ohio 1997*
Gelatin silver print, 30 x 40 inches
Collection of the artist



72. *21st Street and 31st Avenue, Astoria, Queens, New York 2004*
Gelatin silver print, 48 x 66 inches
Collection of the artist



73. *Oakland Lake Park, Oakland Gardens, Queens, New York 2004*
Gelatin silver print, 66 x 48 inches
Collection of the artist



74. *Between 165-05 and 165-09 85th Avenue, Jamaica Hills, Queens, New York 2003*
Gelatin silver print, 66 x 48 inches
Collection of the artist



75. *Pontoosuc Lake, Pittsfield, Massachusetts, July 2002*
Chromogenic development print, 20 x 24 inches
Collection of the artist



76. *Mill complex (currently Orchard Equipment and Supply Company), Conway, Massachusetts, July 2002*
Chromogenic development print, 24 x 20 inches
Collection of the artist



77. *Mill Village Road, Deerfield, Massachusetts, July 2002*
Chromogenic development print, 24 x 20 inches
Collection of the artist



78. *Marker stone in the woods, Hubbardston, Massachusetts, June 2002*
Chromogenic development print, 24 x 20 inches
Collection of the artist



79. *Village of Boxboro Station, Boxboro, Massachusetts, June 2002*
Chromogenic development print, 24 x 20 inches
Collection of the artist

