



# Smithsonian American Art Museum

## *1934: A New Deal for Artists* Feb. 27, 2009—Jan. 3, 2010 Checklist

### Section 1: American People

1. Ivan Albright  
*The Farmer's Kitchen*, about 1934  
Oil on canvas, 36 x 30 1/8 inches (91.5 x 76.5 cm.)  
Smithsonian American Art Museum  
Transfer from the U.S. Department of Labor
2. Robert Brackman  
*Somewhere in America*, 1934  
Oil on canvas, 30 1/8 x 25 1/8 inches (76.5 x 63.9 cm.)  
Smithsonian American Art Museum  
Transfer from the U.S. Department of Labor
3. Kenneth M. Adams  
*Juan Duran*, 1933-1934  
Oil on canvas, 40 1/8 x 30 1/8 inches (102.0 x 76.5 cm.)  
Smithsonian American Art Museum  
Transfer from the U.S. Department of Labor
4. J. Theodore Johnson  
*Chicago Interior*, 1933-1934  
Oil on canvas, 28 x 34 inches (71.2 x 86.4 cm.)  
Smithsonian American Art Museum  
Transfer from the U.S. Department of Labor
5. E. Martin Hennings  
*Homeward Bound*, 1933-1934  
Oil on canvas, 30 1/4 x 36 1/4 inches (76.8 x 92.1 cm.)  
Smithsonian American Art Museum  
Transfer from the U.S. Department of Labor



### Section 2: City Life

6. Lily Furedi  
*Subway*, 1934  
Oil on canvas, 39 x 48 1/4 inches (99.1 x 122.6 cm.)  
Smithsonian American Art Museum  
Transfer from the U.S. Department of the Interior, National Park Service
7. Carl Gustaf Nelson  
*Central Park*, about 1934  
Oil on canvas, 31 7/8 x 44 inches (81.0 x 111.8 cm.)  
Smithsonian American Art Museum  
Transfer from the U.S. Department of Labor
8. Millard Sheets  
*Tenement Flats*, 1933-1934  
Oil on canvas, 40 1/4 x 50 1/4 inches (102.1 x 127.6 cm.)  
Smithsonian American Art Museum  
Transfer from the U.S. Department of the Interior, National Park Service



9. Daniel Celentano  
*Festival*, about 1933-1934  
Oil on canvas mounted on fiberboard, 48 1/8 x 60 1/8 inches (122.3 x 152.8 cm.)  
Smithsonian American Art Museum  
Transfer from the U.S. Department of Labor



10. Ilya Bolotowsky  
*In the Barber Shop*, 1934  
Oil on canvas, 23 7/8 x 30 1/8 inches (60.6 x 76.5 cm.)  
Smithsonian American Art Museum  
Transfer from the U.S. Department of Labor



## Section 2: Leisure

11. Gerald Sargent Foster  
*Racing*, 1934  
Oil on canvas, 22 1/8 x 34 1/8 inches (56.2 x 86.6 cm.)  
Smithsonian American Art Museum  
Transfer from the U.S. Department of the Interior, National Park Service



12. Agnes Tait  
*Skating in Central Park*, 1934  
Oil on canvas  
Smithsonian American Art Museum  
Transfer from the U.S. Department of Labor



13. Julia Eckel  
*Radio Broadcast*, 1933-1934  
Oil on canvas, 40 1/8 x 55 5/8 inches (102.0 x 141.2 cm.)  
Smithsonian American Art Museum  
Transfer from the U.S. Department of Labor



14. Morris Kantor  
*Baseball at Night*, 1934  
Oil on linen, 37 x 47 1/4 inches (94.0 x 120.0 cm.)  
Smithsonian American Art Museum  
Gift of Mrs. Morris Kantor



15. Attributed to Martha Levy  
*Winter Scene*, 1934  
Oil on fiberboard, 21 1/2 x 27 3/8 inches (54.6 x 69.5 cm.)  
Smithsonian American Art Museum  
Transfer from the U.S. Department of Labor



## Section 3: Labor

16. Earle Richardson  
*Employment of Negroes in Agriculture*, 1934  
Oil on canvas, 48 x 32 1/8 inches (121.8 x 81.6 cm.)  
Smithsonian American Art Museum  
Transfer from the U.S. Department of Labor



17. Jacob Getlar Smith  
*Snow Shovellers*, 1934  
Oil on canvas, 29 7/8 x 40 1/8 inches (76.0 x 101.9 cm.)  
Smithsonian American Art Museum  
Transfer from the U.S. Department of Labor



18. Harry Gottlieb  
*Filling the Ice House*, 1934  
Oil on canvas  
Smithsonian American Art Museum  
Transfer from the U.S. Department of Labor



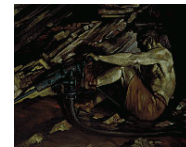
19. Douglass Crockwell  
*Paper Workers*, 1934  
Oil on canvas, 36 1/8 x 48 1/4 inches (91.7 x 122.4 cm.)  
Smithsonian American Art Museum  
Transfer from the U.S. Department of Labor



20. Pino Janni  
*Waterfront Scene*, 1934  
Oil on canvas, 40 1/8 x 53 3/4 inches (101.8 x 136.6 cm)  
Smithsonian American Art Museum  
Transfer from the U.S. Department of Labor



21. Tyrone Comfort  
*Gold Is Where You Find It*, 1934  
Oil on canvas, 40 1/8 x 50 1/8 inches (101.9 x 127.3 cm.)  
Smithsonian American Art Museum  
Transfer from the U.S. Department of the Interior, National Park Service



22. Harry W. Scheuch  
*Workers on the Cathedral of Learning*, 1934  
Oil on canvas, 30 1/8 x 26 1/8 inches (76.5 x 66.5 cm.)  
Smithsonian American Art Museum  
Transfer from the U.S. Department of Labor



23. Harry W. Scheuch  
*Finishing the Cathedral of Learning*, 1934  
Oil on canvas, 40 1/4 x 30 1/4 inches (102.3 x 76.9 cm.)  
Smithsonian American Art Museum  
Transfer from the U.S. Department of Labor



#### Section 4: Industry

24. Arnold Ness Klagstad  
*Archer Daniels Midland Elevator*, 1933-1943  
Oil on canvas, 22 1/4 x 28 1/8 inches (56.6 x 71.4 cm.)  
Smithsonian American Art Museum  
Transfer from the U.S. Department of Labor



25. Raymond White Skolfield  
*Natural Power*, 1934  
Oil on canvas, 34 1/8 x 36 1/8 inches (86.8 x 91.8 cm.)  
Smithsonian American Art Museum  
Transfer from the U.S. Department of Labor



26. Ray Strong  
*Golden Gate Bridge*, 1934  
Oil on canvas, 44 1/8 x 71 3/4 inches (112.0 x 182.3 cm.)  
Smithsonian American Art Museum  
Transfer from the U.S. Department of the Interior, National Park Service



27. E. Dewey Albinson  
*Northern Minnesota Mine*, 1934  
Oil on canvas, 40 x 50 1/8 inches (101.6 x 127.2 cm.)  
Smithsonian American Art Museum  
Transfer from the U.S. Department of Labor



28. Austin Mecklem  
*Engine House and Bunkers*, 1934  
Oil on canvas, 38 x 50 1/4 inches (96.5 x 127.6 cm.)  
Smithsonian American Art Museum  
Transfer from the U.S. Department of Labor



29. Max Arthur Cohn  
*Coal Tower*, 1934  
Oil on canvas, 22 1/8 x 28 inches (56.2 x 71.2 cm.)  
Smithsonian American Art Museum  
Transfer from the U.S. Department of Labor



30. Carl Redin  
*At Madrid Coal Mine, New Mexico*, 1934  
Oil on canvas, 30 x 38 inches (76.2 x 96.5 cm)  
Smithsonian American Art Museum  
Transfer from the U.S. Department of Labor



31. William Arthur Cooper  
*Lumber Industry*, 1934  
Oil on canvas, 24 1/8 x 29 7/8 inches (61.3 x 75.9 cm)  
Smithsonian American Art Museum  
Transfer from the U.S. Department of Labor



32. Karl Fortess  
*Island Dock Yard*, about 1934  
Oil on canvas, 32 1/4 x 48 1/8 inches (81.8 x 122.2 cm.)  
Smithsonian American Art Museum  
Transfer from the U.S. Department of Labor



33. Paul Kelpé  
*Machinery (Abstract #2)*, 1933-1934  
Oil on canvas, 38 1/4 x 26 3/8 inches (97.0 x 67.0 cm.)  
Smithsonian American Art Museum  
Transfer from the U.S. Department of Labor

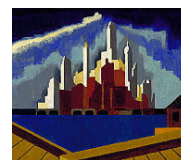


34. Joe Jones  
*Street Scene*, 1933  
Oil on canvas, 25 1/8 x 35 7/8 inches (63.7 x 91.1 cm.)  
Smithsonian American Art Museum  
Transfer from the U.S. Department of Labor



## Section 5: The City

35. Thomas James Delbridge  
*Lower Manhattan*, about 1933-1934  
Oil on canvas, 26 1/8 x 30 1/4 inches (66.3 x 76.9 cm)  
Smithsonian American Art Museum  
Transfer from the U.S. Department of Labor



36. Unidentified  
*(Underpass--New York)*, 1933-1934  
 Oil on photograph on canvas mounted on paperboard,  
 19 7/8 x 23 7/8 inches (50.6 x 60.8 cm.)  
 Smithsonian American Art Museum, Transfer from the  
 Internal Revenue Service through the General Services Administration
37. Charles L. Goeller  
*Third Avenue*, about 1933-1934  
 Oil on canvas, 36 x 30 1/8 inches (91.4 x 76.4 cm.)  
 Smithsonian American Art Museum  
 Transfer from the U.S. Department of Labor
38. Beulah R. Bettersworth  
*Christopher Street, Greenwich Village*, 1934  
 Oil on canvas, 30 1/8 x 24 1/4 inches (76.5 x 61.5 cm.)  
 Smithsonian American Art Museum  
 Transfer from the U.S. Department of the Interior, National Park Service
39. Herman Maril  
*Sketch of Old Baltimore Waterfront*, 1934  
 Oil on fiberboard, 18 1/8 x 14 1/8 inches (46.0 x 36.0 cm.)  
 Smithsonian American Art Museum  
 Transfer from the U.S. Department of Labor
40. John Cuning  
*Manhattan Skyline*, about 1934  
 Oil on canvas, 32 1/8 x 48 1/8 inches (81.5 x 122.2 cm)  
 Smithsonian American Art Museum  
 Transfer from the U.S. Department of Labor
41. Saul Berman  
*River Front*, 1934  
 Oil on canvas, 16 x 24 inches (40.7 x 61.1 cm.)  
 Smithsonian American Art Museum  
 Transfer from the U.S. Department of Labor
42. Robert A. Darrah Miller  
*Farm*, about 1934  
 Oil on canvas, 22 x 28 1/8 inches (55.9 x 71.5 cm.)  
 Smithsonian American Art Museum  
 Transfer from the U.S. Department of Labor
43. Paul Benjamin  
*Cross Road--Still Life*, about 1933-1934  
 Oil on canvas, 28 1/4 x 26 1/4 inches (71.6 x 66.6 cm.)  
 Smithsonian American Art Museum  
 Transfer from the U.S. Department of the Interior, National Park Service
44. Arthur E. Cederquist  
*Old Pennsylvania Farm in Winter*, 1934  
 Oil on canvas, 30 1/8 x 40 1/8 inches (76.5 x 102.0 cm.)  
 Smithsonian American Art Museum  
 Transfer from the U.S. Department of Labor
45. O. Louis Guglielmi  
*Martyr Hill*, about 1933-1934  
 Oil on canvas, 22 x 32 inches (55.9 x 81.4 cm.)  
 Smithsonian American Art Museum  
 Transfer from the U.S. Department of Labor



46. Erle Loran  
*Minnesota Highway*, 1933-1934  
Oil on canvas, 30 1/8 x 36 inches (76.5 x 91.5 cm.)  
Smithsonian American Art Museum  
Transfer from the U.S. Department of Labor



### Section 6: The Country

47. Kenjiro Nomura  
*The Farm*, 1934  
Oil on canvas, 38 1/4 x 46 1/8 inches (97.2 x 117.1 cm.)  
Smithsonian American Art Museum  
Transfer from the U.S. Department of Labor

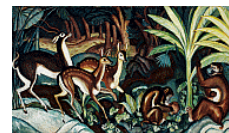


48. Gale Stockwell  
*Parkville, Main Street*, 1933  
Oil on canvas, 28 1/4 x 35 3/8 inches (71.8 x 90.0 cm.)  
Smithsonian American Art Museum  
Transfer from the U.S. Department of Labor



### Section 7: Nature

49. Paul Kirtland Mays  
*Jungle*, 1933-1934  
Oil on canvas, 42 1/4 x 75 1/2 inches (107.3 x 191.7cm)  
Smithsonian American Art Museum  
Transfer from the U.S. Department of the Interior, National Park Service



50. Alice Dinneen  
*Black Panther*, 1934  
Oil on canvas, 30 1/8 x 24 1/8 inches (76.5 x 61.4 cm)  
Smithsonian American Art Museum  
Transfer from the U.S. Department of Labor



51. Ila McAfee Turner  
*Mountain Lions*, 1933-1934  
Oil on canvas, 36 1/8 x 42 inches (91.9 x 106.8 cm)  
Smithsonian American Art Museum  
Transfer from the U.S. Department of Labor



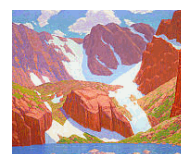
52. Winthrop Duthie Turney  
*Selection from Birds and Animals of the United States*, about 1933-1934  
Oil on canvas, 32 x 36 1/8 inches (81.3 x 91.6 cm)  
Smithsonian American Art Museum  
Transfer from the General Services Administration



53. Leo Breslau  
*Plowing*, 1934  
Oil on wood: plywood, 29 7/8 x 35 7/8 inches (75.8 x 91.2 cm.)  
Smithsonian American Art Museum  
Transfer from the U.S. Department of Labor



54. Paul Kauvar Smith  
*The Sky Pond*, 1933-1934  
Oil on canvas, 42 x 50 1/8 inches (106.8 x 127.4 cm.)  
Smithsonian American Art Museum  
Transfer from the U.S. Department of Labor



55. Charles Reiffel  
*Road in the Cuyamacas*, about 1933-1934  
Oil on canvas, 40 1/8 x 50 3/8 inches (101.9 x 128.0 cm)  
Smithsonian American Art Museum  
Transfer from the U.S. Department of Labor



56. Ross Dickinson  
*Valley Farms*, 1934  
Oil on canvas, 39 7/8 x 50 1/8 inches (101.4 x 127.3 cm.)  
Smithsonian American Art Museum  
Transfer from the U.S. Department of Labor

