



Key Images *The Art and Craft of Greene & Greene*

The following images are for promotion of *The Art and Craft of Greene & Greene* only, on view at the museum's Renwick Gallery from March 13 to June 7, 2009. Any reproduction of these images must include the full caption information. Images may not be cropped, bled off the page, altered in any way or superimposed with any printing. High-resolution images may be downloaded from <ftp://saam-press@ftp.si.edu>. Call (202) 633-8530 for the password.



1.



2.



3.



4.



5.



6.



7.



8.



9.



10.

1. Adelaide A. Tichenor house, Long Beach, 1904-05

Watercolor by Charles Greene around 1905
Courtesy of Greene and Greene Archives,
The Gamble House, University of Southern
California

2. Courtyard, Adelaide A. Tichenor house,
Long Beach, 1904-05

Watercolor by Charles Greene around 1905
Courtesy of Greene and Greene Archives,
The Gamble House, University of Southern
California

3. Covered walkway and courtyard,
Arturo Bandini house, Pasadena, 1903
Charles Sumner Greene Collection,
Environmental Design Archives, University
of California, Berkeley

4. Dining-room armchair, 1908-09
Robert R. Blacker house, Pasadena, 1907-09.
Private collection

5. Dining-room plant stand, 1908-09
Robert R. Blacker house, Pasadena, 1907-09.
Private collection

6. Dining-room side chair, 1905-06
Laurabelle A. Robinson house
Huntington Art Collections
Gift of the estate of Henry M. Robinson

7. Entry-hall bench, 1909
Robert R. Blacker house, Pasadena, 1907-09
Courtesy of American Decorative Art 1900
Foundation.
Photograph: Gavin Ashworth
© American Decorative Art 1900 Foundation

8. Entry-hall window, Jennie A. Reeve house,
Long Beach, 1903-04
Private collection, New York
Photograph courtesy of Sotheby's, New York

9. Exterior wall lantern, Arthur A. Libby
house, Pasadena, 1905
Private collection
Photograph © Ognen Borissov/Interfoto

10. Gamble house – front
David B. Gamble house, Pasadena, 1907-09
Photograph © Alexander Vertikoff



11.



12.



13.



14.



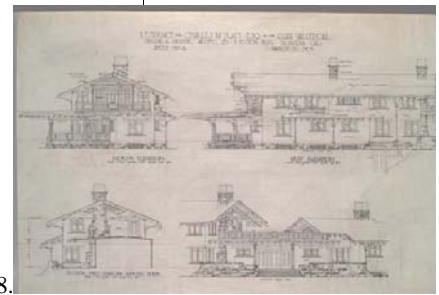
15.



16.



17.



18.



19.



20.



21.

11. Gamble house – northwest
David B. Gamble house, Pasadena, 1907-09
Photograph © Alexander Vertikoff

12. Hall chair, 1907
Dr. W. T. Bolton house, Pasadena, 1906
Courtesy of Guardian Stewardship
Photograph courtesy of Sotheby's, New York

13. Lantern, 1910
James A. Culbertson house, Pasadena, 1902-14
Courtesy of Guardian Stewardship
Photograph courtesy of Sotheby's, New York

14. Letter box, 1914, David B. Gamble house, Pasadena, 1907-09
Courtesy of The Gamble House, USC
Photograph © Ognen Borissov/Interfoto

15. Living-room armchair, 1912
Charles M. Pratt house, Ojai, 1908-11
Private collection

16. Living-room firescreen, about 1914
William R. Thorsen house, Berkeley, 1908-10
Courtesy of The Gamble House, USC
Photograph © Ognen Borissov/Interfoto

17. Living-room table, 1912
Charles M. Pratt house, Ojai, 1908-11
Private collection

18. North and west elevation drawings, 1909
Charles M. Pratt house, Ojai, 1908-11
Courtesy of Greene and Greene Archives,
The Gamble House, University of Southern California

19. Watercolor for entry-hall window, Jennie A. Reeve house, Long Beach, 1903-04
Courtesy of Greene and Greene Archives,
The Gamble House, University of Southern California

20. Photograph of Charles Greene, about 1906
Courtesy of Los Angeles Public Library

21. Photograph of Henry Greene, about 1906
Courtesy of Los Angeles Public Library