



The Great American Hall of Wonders
July 15, 2011 – Jan. 8, 2012
Checklist

- 1. Charles Willson Peale, born Queen Anne County, MD 1741, died Philadelphia, PA 1827
The Artist in His Museum, 1822
oil on canvas, 103 3/4 x 79 7/8 inches
Courtesy of the Pennsylvania Academy of the Fine Arts,
Gift of Mrs. Sarah Harrison (The Joseph Harrison Jr. Collection)



Mastodon

- 2. Charles Willson Peale, born Queen Anne County, MD 1741, died Philadelphia, PA 1827
Exhumation of the Mastodon, 1806 – 1808
oil on canvas, 48 3/4 x 62 1/2 inches
Maryland Historical Society, Baltimore City Life Collections
- 3. Alfred Jacob Miller, born Baltimore, MD 1810, died Baltimore, MD 1874
The Mastodon Skeleton at Rembrandt Peale's Baltimore Museum, 1836
lithograph, 13 1/4 x 17 inches
Maryland Historical Society, H. Furlong Baldwin Library
- 4. John D. Godman (1794 – 1830)
American Natural History Volume 2, Part 1, Mastology
(Philadelphia: H. C. Carey and I. Lea, 1826)
book, open to page 205, The Mammoth Skeleton
Titian Ramsay Peale (1799 – 1885)
Cullman Library, Rare Books, Smithsonian Institution Libraries, Washington, DC



The Buffalo

- 5. Albert Bierstadt, born Solingen, Germany 1830, died New York City 1902
The Last of the Buffalo, about 1888
oil on canvas, 26 x 36 inches
Private collection
- 6. Albert Bierstadt, born Solingen, Germany 1830, died New York City 1902
Studies of Bison, 1880s
oil on paper, 14 x 19 inches
Gilcrease Museum, Tulsa, OK
- 7. George Catlin, born Wilkes-Barre, PA 1796, died Jersey City, NJ 1872
Buffalo Bull, Grazing on the Prairie, 1832–1833
oil on canvas, 24 x 29 inches
Smithsonian American Art Museum, Gift of Mrs. Joseph Harrison Jr.



8. George Catlin, born Wilkes-Barre, PA 1796, died Jersey City, NJ 1872
Buffalo Herds Crossing the Upper Missouri, 1832
 oil on canvas, 11 1/4 x 14 3/8 inches
 Smithsonian American Art Museum, Gift of Mrs. Joseph Harrison Jr.



9. George Catlin, born Wilkes-Barre, PA 1796, died Jersey City, NJ 1872
Catlin the Artist Shooting Buffalos in Texas with Colt's Revolving Pistol, 1855
 oil on canvas, 19 x 26 1/2 inches
 Wadsworth Atheneum Museum of Art, Hartford, CT,
 The Ella Gallup Sumner and Mary Catlin Sumner Collection Fund



10. William Jacob Hays Sr., born New York City, 1830, died New York City, 1875
A Herd of Bison Crossing the Missouri River, 1863
 oil on canvas, 36 x 72 inches
 Buffalo Bill Historical Center, Cody, WY,
 Gertrude Vanderbilt Whitney Trust Fund Purchase



11. John Mix Stanley, born Canandaigua, NY 1814, died Detroit, MI 1872
Buffalo Hunt on the Southwestern Prairies, 1845
 oil on canvas, 40 1/2 x 60 3/4 inches
 Smithsonian American Art Museum, Gift of the Misses Henry



12. John T. Bowen, born England about 1801, died Philadelphia, PA about 1856
 after John James Audubon, born Les Cayes, Haiti 1785, died New York City 1851
Bos americanus, American Bison or Buffalo, No. 12, Pl. LVII, 1845
 hand colored lithograph, 19 x 21 1/4 inches
 Buffalo Bill Historical Center, Cody, WY, Gift of the Coe Foundation



13. John T. Bowen, born England about 1801, died Philadelphia, PA about 1856
 after John James Audubon, born Les Cayes, Haiti 1785, died New York City 1851
Bos americanus, American Bison or Buffalo, No. 12, Pl. LVI, 1845
 hand colored lithograph, 21 x 27 1/4 inches
 Buffalo Bill Historical Center, Cody, WY, Whitney Purchase Fund



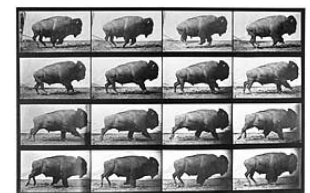
14. Currier and Ives, publisher
 after George Catlin, born Wilkes-Barre, PA 1796, died Jersey City, NJ 1872
Buffalo Bull Chasing Back: "Turn About is Fair Play," 1850s
 lithograph, 17 3/4 x 11 1/4 inches
 Museum of the City of New York, Gift of Natalie W. Peters,
 Harry T. Peters Jr. and Natalie P. Webster



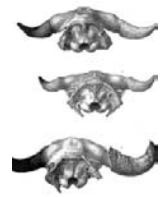
15. Ernest Griset, born Boulogne, France 1843/1844, died London, England 1907
The Far West. ---Shooting Buffalo on Line of the Kansas-Pacific Railroad
 from *Frank Leslie's Illustrated Newspaper*, June 3, 1871
 wood engraving on paper, 9 1/8 x 14 1/4 inches
 Private collection



16. Eadweard Muybridge
 born Kingston upon Thames, England 1830, died Kingston upon Thames 1904
Buffalo; Galloping, 1887
 collotype, 8 3/4 x 13 7/8 inches
 Iris and B. Gerald Cantor Center for Visual Arts, Stanford University, Stanford
 Family Collections



17. Joel Asaph Allen (1838 – 1921)
The American Bisons, Living and Extinct
 (Cambridge, MA: University Press and Welch, Bigelow & Co., 1876)
 book, open to Pl. V, *Bison americanus*
 Private collection



18. William Edward Webb (active 1870s)
Buffalo Land: An Authentic Account of the Discoveries, Adventures, and Mishaps of a Scientific and Sporting Party in the Wild West
 (Philadelphia: Hubbard Brothers, 1872)
 book, open to p. 335, Taking and Being Taken
 Private collection



American Ingenuity

19. William Holbrook Beard, born Painesville, OH 1824, died New York City 1900
Scientists at Work, about 1894/1895
 oil on canvas, 16 x 24 inches
 Private collection



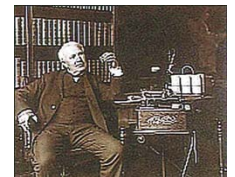
20. Unidentified artist (United States, nineteenth century)
Man of Science, 1839
 oil on canvas, 39 1/4 x 33 7/16 inches
 National Gallery of Art, Washington, DC, Gift of Edgar William and Bernice Chrysler Garbisch



21. John Sartain, born London, England 1808, died Philadelphia, PA 1897
 after Christian Schussele, born Guebwiller, France 1824/6, died Merchantville, NJ 1879
Men of Progress, 1863
 mezzotint, 13/16 x 35 13/16 inches
 National Portrait Gallery, Smithsonian Institution



22. Pach Brothers Studio (established 1867)
Thomas Alva Edison, 1907
 gelatin silver print, 10 7/16 x 13 inches
 National Portrait Gallery, Smithsonian Institution



23. Thomas Alva Edison, born Milan, OH 1847, died West Orange, NJ 1931
Electric lamp, 1880
 wood, brass, bamboo, platinum, glass, plaster, and cork, 7 x 2 3/8 inches
 Smithsonian Institution, National Museum of American History, Kenneth E. Behring Center



24. Horatio Greenough, born Boston, MA 1805, died Somerville, MA 1852
Samuel F. B. Morse, 1831
 marble, 19 1/2 x 12 x 8 3/4 inches
 Smithsonian American Art Museum, Gift of Edward L. Morse



25. Margaret E. Knight, born York, ME 1838, died Framingham, MA 1914
Patent Model of Machine for Making Paper Bags, 1879
 U.S. Patent No. 220925
 wood, brass, paper, and paint, 6 3/8 x 6 3/4 x 12 1/8 inches
 Smithsonian Institution, National Museum of American History, Kenneth E. Behring Center



26. Samuel F. B. Morse, born Charlestown, MA 1791, died New York City 1872
Prototype for Canvas Stretcher Telegraph Receiver, 1837
 wood, brass, jute, paper, 41 1/2 x 39 1/4 x 7 3/4 inches
 Smithsonian Institution, National Museum of American History, Kenneth E. Behring Center
 no image
27. Samuel F. B. Morse, born Charlestown, MA 1791, died New York City 1872
Port-rule Telegraph Transmitter, 1837
 wood, lead, cloth, and brass, 7 1/2 x 7 x 36 3/4 inches
 Smithsonian Institution, National Museum of American History, Kenneth E. Behring Center
 no image

Zoology

28. Henry Alexander, born San Francisco, CA 1860, died New York City 1894
The First Lesson (The Taxidermist), 1885
 oil on canvas, 25 x 34 inches
 The Fine Arts Museums of San Francisco, Mildred Anna Williams Collection



29. John James Audubon, born Les Cayes, Haiti 1785, died New York City 1851
Cardinal Grosbeak, about 1811
 chalk, pencil, watercolor, and ink on paper, 16 3/4 x 11 3/8 inches
 Smithsonian American Art Museum, Transfer from U.S. National Museum



30. John James Audubon, born Les Cayes, Haiti 1785, died New York City 1851
Purple Grackle, about 1811
 watercolor, pencil, chalk, and ink on paper, 19 1/4 x 14 inches
 Smithsonian American Art Museum, Transfer from U.S. National Museum



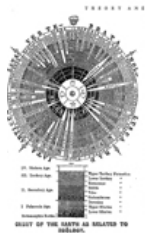
31. John James Audubon, born Les Cayes, Haiti 1785, died New York City 1851
 page from *Journal of John James Audubon*, October 12, 1820 – December 31, 1821
 From the collections of the Ernst Mayr Library of the Museum of Comparative Zoology, Harvard University



32. Carleton Watkins, born Oneonta, NY 1829, died Imola, CA 1916
Louis Agassiz Lecturing, 1872
 albumen print, approximately 6 1/2 x 4 1/4 inches
 From the collections of the Ernst Mayr Library of the Museum of Comparative Zoology, Harvard University



33. Louis Agassiz (1807 – 1873) and Augustus A. Gould (1805 – 1866)
Principles of Zoology, Touching on the Structure, Development, Distribution, and Natural Arrangement of the Races of Animals, Living and Extinct
 (revised ed. Boston: Gould and Lincoln, 1851)
 book, open to frontispiece, *The Crust of the Earth as Related to Zoology*
 From the collections of the Ernst Mayr Library of the Museum of Comparative Zoology, Harvard University



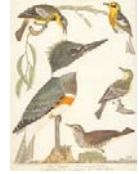
34. Robert Ridgway (1850 – 1929)
A Nomenclature of Colors for Naturalists, and Compendium of Useful Knowledge for Ornithologists
 (Boston: Little Brown, and Company, 1886)
 book, open to Pl. XIV, Figures Illustrating Various [Feather] Color-Markings
 Private collection



35. Thomas Say (1787 – 1834)
American Entomology, or Descriptions of the Insects of North America
 (Philadelphia: Samuel Augustus Mitchell, 1824)
 book, open to Pl. 40, *Papilio turnus*
 C. Tiebout, engraver, after Titian Ramsay Peale (1799 – 1885)
 Georgetown University's Lauinger Library, Special Collections



36. Alexander Wilson (1766 – 1813)
American Ornithology; or, the Natural History of the Birds of the United States
 (Vol. 3, Philadelphia: Bradford and Inskip, 1811)
 book, open to Pl. XXIII, 1. Belted Kingfisher, 2. Black and yellow Warbler,
 3. Blackburnian W[arbler], 4. Autumnal W[arbler], 5. Water Thrush
 Cullman Library, Smithsonian Institution Libraries, Washington, DC



The Locomotive

37. Jasper Francis Cropsey, born Rossville, NY 1823, died Hastings-on-Hudson, NY 1900
Starrucca Viaduct, Pennsylvania, 1865
 oil on canvas, 22 3/8 x 36 3/8 inches
 Lent by the Toledo Museum of Art, Purchased with funds from the Florence
 Scott Libbey Bequest in Memory of her Father, Maurice A. Scott



38. Robert J. Havell Jr., born Reading, England 1793, died Tarrytown, NY 1878
Two Artists in a Landscape, 1840 – 1850
 oil on canvas, 35 x 50 inches
 Collection of Fenimore Art Museum, Cooperstown, NY,
 Gift of Stephen C. Clark



39. George Inness, born Newburgh, NY 1825, died Bridge of Allan, Scotland 1894
The Lackawanna Valley, about 1856
 oil on canvas, 33 7/8 x 50 3/16 inches
 National Gallery of Art, Washington, DC,
 Gift of Mrs. Huttleson Rodgers



40. Herman Schyler (active in California, 1880s)
The First Train, about 1880
 oil on canvas, 27 5/8 x 47 inches
 Courtesy of the Bancroft Library, Robert R. Honeyman Jr. Collection,
 University of California, Berkeley



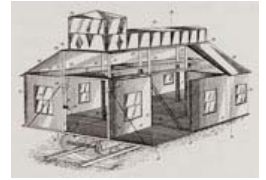
41. Newbold Hough Trotter, born Philadelphia, PA 1827, died Atlantic City, NJ 1898
Held Up, 1897
 oil on canvas, Framed: 23 1/4 x 19 1/8 inches
 Smithsonian Institution, National Museum of American History,
 Kenneth E. Behring Center



42. *Railway Cut* (bottom image on page)
 about 1840
 India ink and sepia drawing
 Asher B. Durand, born Jefferson Village, NJ 1796, died Maplewood, NJ 1886
 Print Collection, Miriam and Ira D. Wallach Division of Art, Prints and Photographs,
 The New York Public Library, Astor, Lenox and Tilden Foundations



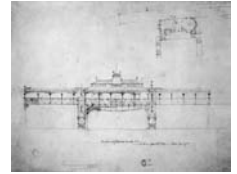
43. Albert Bierstadt, born Solingen, Germany 1830, died New York City 1902
 Drawing for Albert Bierstadt's Patent Application for an
Expanding Railway Car, 1896, U.S. Patent No. 559962
 photo reproduction, 10 x 15 inches
 National Archives and Records Administration



44. Clay, Cosack & Co., lithographer
The Only Route via Niagara Falls and Suspension Bridge, 1876
 lithograph, 17 1/4 x 25 7/8 inches
 Lent by New-York Historical Society, Department of Prints,
 Photographs, and Architectural Collections, Bella C. Landauer Collection



45. Jasper Francis Cropsey, born Rossville, NY 1823, died Hastings-on-Hudson, NY 1900
Design for Gilbert Elevated Railway, Elevation, about 1878
 graphite pencil on paper, 19 1/4 x 26 inches
 Museum of Fine Arts, Boston, Gift of Maxim Karolik for the M. and M. Karolik
 Collection of American Watercolors and Drawings, 1800 – 1875



46. H. Schile & Co., publisher
Across the Continent, 1870s
 hand-colored lithograph, 21 7/8 x 27 5/8 inches
 Courtesy of the Bancroft Library, Robert R. Honeyman Jr. Collection,
 University of California, Berkeley



47. Andrew Joseph Russell, born Walpole, NH 1830, died New York City 1902
East and West Shaking Hands at Laying of the Last Rail, 1869
 ambrotype, 13 x 11 inches
 Union Pacific Railroad Museum, Council Bluffs, IA



48. Charles Roscoe Savage, born Southhampton, England 1832, died Salt Lake City, UT 1909
Dale Creek Bridge, about 1885
 albumen print on paper, 7 1/2 x 9 1/4 inches
 Smithsonian American Art Museum, Museum purchase



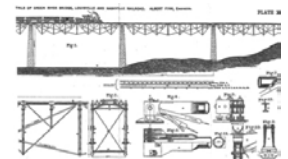
49. Unidentified artist
Artists' Excursion, Sir John's Run, Berkeley Springs, 1858
 salt paper print, 6 3/4 x 6 1/8 inches
 Smithsonian American Art Museum, Museum purchase from the from
 the Charles Isaacs Collection made possible in part by the Luisita L. and
 Franz H. Denghausen Endowment



50. Ross Winans, born Sussex County, NJ 1796, died Baltimore, MD 1877
Patent Model of Locomotive, 1837, U.S. Patent No. 305
 wood and metal, 26 3/4 x 17 x 30 1/2 inches
 Smithsonian Institution, National Museum of American History, Kenneth E. Behring Center



51. George L. Vose (1831 – 1910)
Manual for Railroad Engineers and Engineering Students
 (New York: Charles T. Dillingham, 1878)
 book, open to Pl. XIV, General Elevation and Details of Green River Bridge,
 Louisville and Nashville Railroad, Albert Fink, Engineer
 Private collection



52. *The Last Spike*, 1869
 17 6/10 carat gold alloyed with copper
 William T. Garrett Foundry, San Francisco
 Iris & B. Gerald Cantor Center for Visual Arts at Stanford University,
 Gift of David Hewes



Art and Invention

53. Bass Otis, born Bridgewater, MA 1784, died Philadelphia, PA 1861
Interior of a Smithy, 1815
 oil on canvas, 50 5/8 x 81 inches
 Courtesy of the Pennsylvania Academy of the Fine Arts, Gift of the Artist



54. Currier and Ives, publisher
The Progress of the Century: The Lightening Steam Press, the Electric Telegraph, the Locomotive, the Steamboat, 1876
 lithograph, 13 1/2 x 17 5/8 inches
 Museum of the City of New York, Gift of Natalie W. Peters,
 Harry T. Peters Jr. and Natalie P. Webster



55. Theodore R. Davis, born Boston, MA 1840, died Asbury Park, NJ 1894
Patent-Office, Washington, D.C. – Examiners at Work, 1869
 hand-colored wood engraving on paper, 7 11/16 x 9 5/8 inches
 National Portrait Gallery, Smithsonian Institution, Washington, DC



56. Thomas Eakins, born Philadelphia, PA 1844, died Philadelphia, PA 1916
Mechanical Drawings: Three Spirals, 1860 – 1861
 ink and wash on paper, 11 x 16 3/8 inches
 Courtesy of the Pennsylvania Academy of the Fine Arts,
 Charles Bregler's Thomas Eakins Collection, purchased with the
 partial support of the Pew Memorial Trust and the John S. Phillips Fund



57. Thomas Eakins, born Philadelphia, PA 1844, died Philadelphia, PA 1916
Perspective of a Lathe, 1860
 pen, ink, and watercolor on paper, 16 5/16 x 22 inches
 Hirshhorn Museum and Sculpture Garden, Smithsonian Institution,
 Washington, DC, Gift of Joseph H. Hirshhorn, 1966



58. Samuel F. B. Morse, born Charlestown, MA 1791, died New York City 1872
Series of Heads and a Gear, undated
 ink on paper, 5 1/2 x 7 11/16 inches
 National Academy of Design, New York



59. Samuel F. B. Morse, born Charlestown, MA 1791, died New York City 1872
Profile of a Bearded Man and Design for the Atlantic Cable, 1842
 ink on paper, 7 5/16 x 5 7/8 inches
 National Academy of Design, New York



60. Alfred R. Waud, born London, England 1828, died Marietta, GA 1891
The Model Maker, 1880s
 wood engraving on paper, 11 1/4 x 15 3/4 inches
 Private collection



61. Centennial Photographic Co. (active 1870s – 1880s)
Corliss Engine, about 1876
 silver albumen print, 8 1/4 x 10 1/4 inches
 Print and Picture Collection, Free Library of Philadelphia



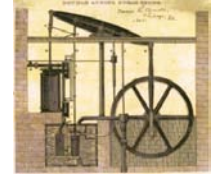
62. George Hensel (active 1850s)
Patent Model for Sewing Machine, 1859, U.S. Patent No. 24737
 various metals, 13 1/2 high x 12 1/2 wide x 8 1/2 deep
 Smithsonian Institution, National Museum of American History, Kenneth E. Behring Center



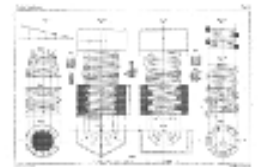
63. Unidentified maker
Patent Model for William Weaver's Improved Cherrystoner, 1866
 U.S. Patent No. 54797
 gilded metal and wood
 about 8 3/4 inches high x 11 1/4 inches wide x 7 3/4 inches deep
 United States Patent and Trademark Office, Alexandria, VA



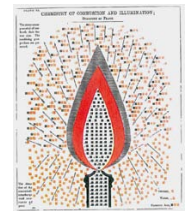
64. Zachariah Allen (1795 – 1882)
The Science of Mechanics
 (Providence, RI: Hutchens and Cory, 1829)
 book, open to Frontispiece, Double Acting Steam Engine
 Private collection



65. William Johnson (1823 – 1864)
The Practical Draughtsman's Book of Industrial Design
 (New York: Stringer and Townsend, 1854)
 book, open to Pl. 15, The Delineation and Development of Helices, Screws, and
 Serpentine
 Private collection

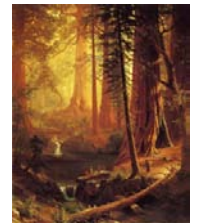


66. Edward L. Youmans (1821 – 1887)
Chemical Atlas; or, the Chemistry of Familiar Objects
 (New York: D. Appleton and Company, 1857, copyright 1854)
 book, open to Pl XI, Chemistry of Combustion and Illumination; Structure of Flame
 Special Collections (Dibner Library), Smithsonian Institution Libraries,
 Smithsonian Institution, Washington, DC



The Big Tree/Botany

67. Albert Bierstadt, born Solingen, Germany 1830, died New York City 1902
Giant Redwood Trees of California, about 1874
 oil on canvas, 52 1/2 x 43 inches
 Collections of Berkshire Museum, Pittsfield, MA, Gift of Zenas Crane



68. Thomas Hill, born Birmingham, England 1829, died Raymond, CA 1908
Grizzly, 1880s
 oil on redwood panel, 42 x 7 inches
 Courtesy of the Bancroft Library, University of California, Berkeley



69. Thomas Hill, born Birmingham, England 1829, died Raymond, CA 1908
Wawona, 1880s
 oil on redwood panel, 42 x 7 inches
 Courtesy of the Bancroft Library, University of California, Berkeley

70. Thomas Hill, born Birmingham, England 1829, died Raymond, CA 1908
The Wawona Tree, 1890s
oil on canvas, 100 3/8 x 30 inches
Yosemite National Park Museum
71. Winslow Homer, born Boston, MA 1836, died Prout's Neck, ME 1910
The Initials, 1864
oil on canvas, 16 x 12 1/4 inches
Private collection
72. Winslow Homer, born Boston, MA 1836, died Prout's Neck, ME 1910
Woodchopper in the Adirondacks, about 1870
oil on canvas, 10 3/4 x 15 3/4 inches
Collection of the Taubman Museum of Art, Roanoke, VA,
Acquired with funds provided by Horace G. Fralin Charitable Trust
73. Daniel Huntington, born New York City 1816, died New York City 1906
Asher Brown Durand, 1857
oil on canvas, 56 1/8 x 44 inches
The Century Association, New York
74. Rembrandt Peale, born Bucks County, PA 1778, died Philadelphia, PA 1860
Rubens Peale with Geranium, 1801
oil on canvas, 28 1/4 x 24 inches
National Gallery of Art, Washington, DC, Patrons' Permanent Fund
75. Henry Cheever Pratt, born Oxford, NH 1803, died Wakefield, MA 1880
The Big Trees of Cal[ifornia] of the Toulome [sic] Group from Nature, 1853
oil on canvas, 29 x 36 inches
Private collection
76. Nagel, Fishbourne, & Kuchel, lithographer
The Stump and Trunk of the Mammoth Tree, Calaveras, 1862
hand-tinted lithograph, 10 1/8 x 14 1/4 inches
Courtesy of the Bancroft Library, Robert R. Honeyman Jr. Collection,
University of California, Berkeley
77. Thomas Eakins, born Philadelphia, PA 1844, died Philadelphia, PA 1916
Beech Tree at Avondale, Pennsylvania, early 1880s
albumen silver print, 8 9/16 x 6 1/2 inches
The J. Paul Getty Museum, Los Angeles
78. Augustus William Ericson, born Örebro, Sweden 1848, died Arcata, CA 1927
Loggers Sawing a Notch in a Giant Sequoia, 1880s
photo reproduction, 9 x 11 inches
Humboldt State University Library, Arcata, CA
79. Augustus William Ericson, born Örebro, Sweden 1848, died Arcata, CA 1927
The Locomotives of the Excelsior Redwood Company, 1880s
photo reproduction, 9 x 11 inches
Humboldt State University Library, Arcata, CA



80. Augustus William Ericson, born Örebro, Sweden 1848, died Arcata, CA 1927
Loggers Sitting in a Notch in a Giant Sequoia, 1880s
photo reproduction, 9 x 11 inches
Humboldt State University Library, Arcata, CA



81. Augustus William Ericson, born Örebro, Sweden 1848, died Arcata, CA 1927
Giant Sequoia Logs, 1880s
photo reproduction, 9 x 11 inches
Humboldt State University Library, Arcata, CA



82. Isaac Rehn, born Pennsylvania, 1815, died York, PA 1883
Lygodium icandeus, about 1865
albumen photogram, 14 x 17 1/4 inches
Smithsonian American Art Museum, Museum purchase from the Charles Isaacs Collection made possible in part by the Luisita L. and Franz H. Denghausen Endowment



83. Carleton Watkins, born Oneonta, NY 1829, died Imola, CA 1916
Foot of Grizzly Giant, Mariposa Grove, 32 feet diameter, 1860s
albumen print, 24 1/4 x 33 1/2 inches
Courtesy of the Bancroft Library, George Davidson Collection, University of California, Berkeley



84. Carleton Watkins, born Oneonta, NY 1829, died Imola, CA 1916
The Grizzly Giant, Mariposa Grove, 32 feet diameter, 1861 printed about 1875
albumen print, 33 5/8 x 24 1/2 inches
Courtesy of the Bancroft Library, George Davidson Collection, University of California, Berkeley



85. Anna K. Weaver (active in Salem, Ohio, 1870s)
No Cross, No Crown, 1874
albumen print of a photogram, 10 3/8 x 8 1/2 inches
Smithsonian American Art Museum, Museum purchase from the Charles Isaacs Collection made possible in part by the Luisita L. and Franz H. Denghausen Endowment



86. William James Bennett, born England 1787, died New York City 1844
after George Harvey, born Tottenham, England 1800, died 1878 England
No. 1, Harvey's American Scenery, Representing Different Atmospheric Effects at Different Times of Day (New York: Charles Vinten, 1841)
book, open to title page, 10 1/4 x 16 inches
The New York Public Library, Astor, Lenox and Tilden Foundations, The Phelps Stokes Collection, Miriam and Ira D. Wallach Division of Art, Prints, and Photographs



87. T. Nelson and Sons, publisher
The Yosemite Valley, and The Mammoth Trees and Geysers of California
(New York: T. Nelson and Sons)
book, open to House on Stump of Big Tree (Calaveras Grove)
Private collection

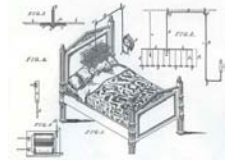


The Clock

88. James Goodwyn Clonney, born Liverpool, England 1812, died Binghamton, NY 1867
Mother's Watch, about 1850
 oil on canvas, 27 x 22 inches
 Westmoreland Museum of American Art, Greensburg, Pennsylvania,
 Gift of Mr. and Mrs. Norman Hirschl
89. Ferdinand Danton Jr., born 1877, died New York City 1939
Time is Money, 1894
 oil on canvas, 16 15/16 x 21 1/8 inches
 The Wadsworth Atheneum Museum of Art, Hartford, CT,
 The Ella Gallup Sumner and Mary Catlin Sumner Collection Fund
90. Attributed to Ralph Earl, born Worcester County, MA 1751, died Bolton, CT 1801
Portrait of a Connecticut Clockmaker, about 1800
 oil on wood, 10 1/4 x 7 7/8 inches
 Smithsonian American Art Museum, Gift of Orrin Wickersham June
91. Francis William Edmonds, born Hudson, NY 1806, died Bronxville, NY 1863
Time to Go, 1857
 oil on canvas, 25 3/8 x 30 3/8 inches
 The Montgomery Museum of Fine Arts, Montgomery, AL,
 The Blount Collection
92. John Haberle, born New Haven, CT 1856, died New Haven, CT 1933
The Changes of Time, 1888
 oil on canvas, 14 3/8 x 20 1/4 inches
 Private collection
93. Lilly Martin Spencer, born Exeter, England 1822, died New York City 1902
Listening to Father's Watch, 1857
 oil on board, 16 x 12 inches
 Currier Museum of Art, Manchester, NH, Gift of Henry Melville Fuller
94. Currier and Ives, publisher
Tick—Tick—Tickle!, 1873
 lithograph, 12 1/4 x 9 3/4 inches
 Library of Congress, Prints and Photographs Division, Washington, DC
95. Currier and Ives, publisher
 after Lilly Martin Spencer, born Exeter, England 1822, died New York City 1902
Time is Precious, 1873
 lithograph, 14 1/2 x 17 5/8 inches
 Library of Congress, Prints and Photographs Division, Washington, DC
96. Winslow Homer, born Boston, MA 1836, died Prout's Neck, ME 1910
New England Factory Life—"Bell Time," 1868
 wood engraving on paper, 8 3/4 x 12 7/8 inches
 Smithsonian American Art Museum, The Ray Austrian Collection,
 gift of Beatrice L. Austrian, Caryl A. Austrian and James A. Austrian



97. Unidentified artist
*Drawing for Patent Application for Samuel Applegate's
 Device for Waking Persons from Sleep*, 1882
 U.S. Patent No. 256265
 photo reproduction, 10 x 15 inches
 National Archives and Records Administration



98. Eadweard Muybridge
 born Kingston upon Thames, England 1830, died Kingston upon Thames 1904
Black Smiths, Two Models, Hammering on Anvil, 1887
 collotype, 8 15/16 x 12 5/8 inches
 Iris and B. Gerald Cantor Center for Visual Arts, Stanford University, Stanford Family Collections



99. Eadweard Muybridge
 born Kingston upon Thames, England 1830, died Kingston upon Thames 1904
Two Black Smiths, Hammering on Anvil, 1887
 collotype, 9 15/16 x 11 9/16 inches
 Iris and B. Gerald Cantor Center for Visual Arts, Stanford University, Stanford Family Collections



100. American Watch Company
Chronometer, or Improved Horse-Timing Watch, about 1859
 silver, gilded brass, enamel, and steel, 2 1/8 x 3 x 3/4 inches
 Smithsonian Institution, National Museum of American History, Kenneth E. Behring Center



101. Forestville Manufacturing Company
Acorn Shelf Clock, about 1849
 wood, glass, painted tin, 24 1/2 x 15 x 5 1/8 inches
 Smithsonian Institution, National Museum of American History, Kenneth E. Behring Center



102. Oliver B. Marsh, born Calais, VT 1824, died Binghamton, NY 1894
Prototype Watch, about 1849 – 1851
 gold, brass, enamel, 3 1/8 x 2 5/16 x 5/8 inches
 Smithsonian Institution, National Museum of American History, Kenneth E. Behring Center



103. Eli Terry, born South Windsor, CT 1772, died Plymouth, CT 1852
Mass-produced Box Clock, about 1814 – 1816
 glass, wood, lead, brass, bell metal, 20 3/4 x 14 x 3 3/8 inches
 Smithsonian Institution, National Museum of American History, Kenneth E. Behring Center



104. Eli Terry, born South Windsor, CT 1772, died Plymouth, CT 1852
 and Samuel Terry, born South Windsor, CT, 1774, died Bristol, CT 1853
Pillar and Scroll Shelf Clock, about 1825
 wood, glass, brass, and lead, 31 1/2 x 17 5/8 x 4 3/4 inches
 Smithsonian Institution, National Museum of American History, Kenneth E. Behring Center



105. International Time Recording Company
Dial Time Recorder, about 1916
 wood, iron, brass, and enamel
 clock without base: 35 x 27 x 42 inches; wheel diameter: 27 inches
 Smithsonian Institution, National Museum of American History, Kenneth E. Behring Center

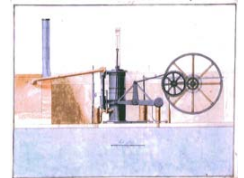


Steamboat

106. James Bard, born New York City 1815, died White Plains, NY 1897
America, 1853, oil on canvas, 34 x 53 inches
Courtesy of The Mariners' Museum, Newport News, VA



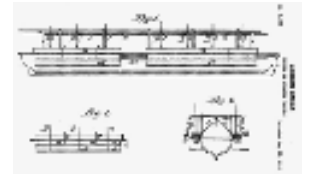
107. James Kearney
Drawing for Patent Application for Robert Fulton's Atmospheric Steamboat Engine (A), Assembled Engine & Boiler (Clermont), 1809
pen and ink with watercolor, 16 1/4 x 20 1/2 inches
The American Society of Mechanical Engineers, New York, NY and
The Mariners' Museum, Newport News, VA



108. James Kearney
Drawing for Patent Application for Robert Fulton's Atmospheric Steamboat Engine (B), Assembled Engine & Boiler (Clermont), 1809
pen and ink with watercolor, 16 1/4 x 20 1/2 inches
The American Society of Mechanical Engineers, New York, NY and
The Mariners' Museum, Newport News, VA



109. Unidentified artist
Drawing for Patent Application for Abraham Lincoln's Device, Manner of Buoying Vessels over Shoals, 1849, U.S. Patent No. 6469
photo reproduction, 10 x 15 inches
National Archives and Records Administration



Water-power

110. William Rush, born Philadelphia, PA 1756, died Philadelphia, PA 1833
Allegory of the Waterworks (The Schuylkill Freed), 1825
painted Spanish cedar, 40 x 86 1/2 x 29 inches
Philadelphia Museum of Art, On loan from the Commissioners of Fairmount Park



111. James B. Francis (1815 – 1892)
Lowell Hydraulic Experiments (Second ed. New York: D. Van Nostrand, 1868)
book, open to Pl. VIII, Centre Vent Wheel at the Boott Cotton Mills
Private collection



Niagara Falls

112. George Catlin
born Wilkes-Barre, PA 1796, died Jersey City, NJ 1872
Niagara Falls, 1827 – 28
oil on canvas, 16 3/8 x 85 1/2 inches
Smithsonian American Art Museum, Gift of Mrs. Joseph Harrison Jr.



113. George Catlin, born Wilkes-Barre, PA 1796, died Jersey City, NJ 1872
Bird's Eye View of Niagara Falls, about 1827
gouache, 17 5/8 x 15 1/2 inches
Private collection



114. Alvan Fisher, born Needham, MA, 1792, died Dedham, MA, 1863
The Great Horseshoe Fall, Niagara, 1820
oil on canvas, 34 3/8 x 48 inches
Smithsonian American Art Museum, Museum purchase
115. Charles Fraser, born Charleston, SC 1782, died Charleston, SC 1860
Falls of Niagara, 1850s
oil on canvas, 19 x 26 x 7/8 inches
Private collection
116. Régis François Gignoux, born Lyon, France 1816, died Paris, France 1882
Niagara, The Table Rock—Winter, about 1847
oil on canvas, 52 1/2 x 36 1/2 inches
U.S. Senate Collection, Gift of Caroline Carroll in memory of her husband, Charles Carroll, 1901
117. Hermann Herzog, born Bremen, Germany 1831/2, died Philadelphia, PA 1932
View of Niagara Falls in Moonlight, 1872
oil on canvas, 56 x 48 inches
Michele and Donald D'Amour Museum of Fine Arts, Springfield, Massachusetts,
The James Philip Gray Collection, with additional benefits from the bequests of
Richards Haskell Emerson, Ethel G. Hammersley, and Henry Alexander Phillips
118. George Inness, born Newburgh, NY 1825, died Bridge of Allan, Scotland 1894
Niagara, 1893
oil on canvas, 45 1/4 x 70 1/8 inches
Hirshhorn Museum and Sculpture Garden, Smithsonian Institution,
Gift of the Joseph H. Hirshhorn Foundation, 1966
119. John Frederick Kensett, born Cheshire, CT 1816, died New York City 1872
Niagara Falls, 1855
oil on canvas, 45 x 32 inches
Wadsworth Atheneum Museum of Art, Hartford, CT,
The Dorothy Clark Archibald and Thomas L. Archibald Fund
120. John James Barralet, born Dublin, Ireland 1747, died Philadelphia, PA 1815
Science Unveiling the Beauties of Nature to the Genius of America, 1814
wash drawing, 10 1/4 x 16 inches
The New York Public Library, Astor, Lenox and Tilden Foundations, Stauffer
Collection, Print Collection, Miriam and Ira D. Wallach Division of Art, Prints, and
Photographs
121. Frederic Edwin Church, born Hartford, CT 1826, died New York City 1900
At the Base of The American Falls, Niagara, 1856
oil on paper, 11 5/8 x 13 3/4 inches
Cooper-Hewitt, National Design Museum, Smithsonian Institution, Gift of Louis P. Church



122. Day and Son, publisher
after Frederic Church, born Hartford, CT 1826, died New York City 1900
Niagara, 1857
chromolithograph, 16 5/8 x 36 inches
Castellani Art Museum of Niagara University Collection, Generous Donation
from Dr. Charles Rand Penney, partially funded by the Castellani Purchase Fund,
with additional funding from Mr. and Mrs. Thomas A. Lytle, 2006



123. George Barker, born London, Canada 1844, died Niagara Falls, NY 1894
The Falls in Winter, about 1885
albumen print on paper, 16 1/4 x 19 inches
Smithsonian American Art Museum, Museum purchase from the Charles Isaacs
Collection made possible in part by the Luisita L. and Franz H. Denghausen Endowment

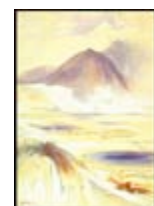


Geology/Geography

124. Thomas Moran, born Bolton, England 1837, died Santa Barbara, CA 1926
Excelsior Geyser, Yellowstone Park, 1873
watercolor and pencil on paper, 12 1/2 x 9 3/4 inches
Smithsonian American Art Museum, Gift of Mrs. Armistead Peter III



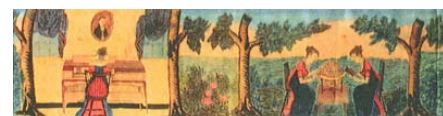
125. Thomas Moran, born Bolton, England 1837, died Santa Barbara, CA 1926
Mammoth Hot Springs, Yellowstone, 1872
watercolor and pencil on paper 14 1/4 x 10 3/8 inches
Smithsonian American Art Museum, Gift of Mrs. Armistead Peter III



126. Samuel F. B. Morse, born Charlestown, MA 1791, died New York City 1872
The Morse Family, about 1809
watercolor on paper, 12 x 15 inches
Smithsonian Institution, National Museum of American History,
Kenneth E. Behring Center



127. Unidentified artist
Miniature Panorama: Scenes from a Seminary for Young Ladies, about 1810 – 1820
watercolor and ink on silk, 7 1/16 x 96 5/8 inches
The St. Louis Art Museum, Museum Purchase and
funds given by the Decorative Arts Society



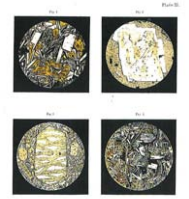
128. Timothy O'Sullivan, born Ireland, 1840, died New York City 1882
Tufa Domes, Pyramid Lake, Nevada (King Survey), 1867
albumen print, 7 7/8 x 10 5/8 inches
Smithsonian American Art Museum, Museum purchase from the Charles Isaacs
Collection made possible in part by the Luisita L. and Franz H. Denghausen
Endowment



129. Franklin White, born Springfield, MA 1813, died 1870
*Trapped Boulder, White Mountains from Photographic Views from
Mt. Washington and Vicinity and the Franconia Range*, 1859
salted paper print, 6 1/2 x 5 1/8 inches
Smithsonian American Art Museum, Museum purchase from the Charles Isaacs Collection,
made possible in part by the Luisita L. and Franz H. Denghausen Endowment



130. Ferdinand Zirkel (1838 – 1912)
Report of the Geological Exploration of the Fortieth Parallel, Clarence King, Geologist-in-Charge
 Vol. 6, *Microscopical Petrography*
 (Washington, DC: Government Printing Office, 1876)
 book, open to P. XI, four microscopic cross sections of rock
 Smithsonian Institution Libraries, Washington, DC



76. [Clarence King, et al.], *Report of the Geological Exploration of the Fortieth Parallel Made by Order of the Secretary of War...* Washington: Government Printing Office, 1876-1880.
 Chromolithograph

131. Francis A. Walker (1840 – 1897)
A Statistical Atlas of the United States Based on the Results of the Ninth Census 1870
 (New York: Julius Bien, Lith., 1874)
 book, open to Pl. XXXI, Chart Showing the Ratio of Church Accommodation
 Special Collections, Research Annex, Smithsonian Institution Libraries, Washington, DC



The Gun

132. John Woodhouse Audubon, born Henderson, KY 1812, died New York City 1862
Portrait of John James Audubon, about 1840
 oil on linen, 44 1/4 x 33 inches
 Courtesy of The New-York Historical Society
133. William M. Davis, born Setauket, NY 1829, died Port Jefferson, NY 1920
Drawing a Bead on a Woodchuck, date unknown
 oil on canvas, 16 3/16 x 21 3/8 inches
 Collection of The Butler Institute of American Art, Youngstown, OH, Museum purchase, 1946
134. Attributed to Gerald Hayward, born Port Hope, Canada 1845, died New York City 1926
Colonel Samuel Colt, 1856
 watercolor on ivory, 3 x 2 3/8 inches
 Wadsworth Atheneum Museum of Art, Hartford, CT, Bequest of Elizabeth Hart Jarvis Colt
135. Martin Johnson Heade, born Lumberville, PA 1819, died St. Augustine, FL 1904
Marsh with Hunter, 1874
 oil on canvas, 11 1/8 x 38 1/8 x 1 1/4 inches
 Private collection
136. William Tylee Ranney, born Middleton, CT 1813, died West Hoboken, NJ 1857
The Trapper's Last Shot, about 1850
 lithograph, 18 x 24 1/2 inches
 Courtesy of the Bancroft Library, University of California, Berkeley,
 Robert J. Honeyman Jr. Collection
137. Arthur Fitzwilliam Tait, born Liverpool, England 1819, died Yonkers, NY 1905
On the Warpath, 1851
 oil on canvas, 34 x 44 inches
 American Museum of Western Art—The Anschutz Collection



138. Winslow Homer, born Boston, MA 1836, died Prout's Neck, ME 1910
Filling Cartridges at the United States Arsenal at Watertown, Massachusetts,
 from *Harper's Weekly*, July 20, 1861
 wood engraving on paper, 11 x 9 1/4 inches
 Smithsonian American Art Museum, The Ray Austrian Collection,
 Gift of Beatrice L. Austrian, Caryl A. Austrian and James A. Austrian
139. Winslow Homer, born Boston, MA 1836, died Prout's Neck, ME 1910
The Army of the Potomac—A Sharpshooter on Picket Duty
 from *Harper's Weekly*, November 15, 1862
 wood engraving on paper, 9 1/8 x 13 3/4 inches
 Smithsonian American Art Museum, Gift of International Business Machines Corporation
140. McKenney and Hall, publisher (active mid-nineteenth century) H. D., lithographer
 copy after Charles Bird King, born Newport, RI 1785, died Washington, DC 1862
ASSEOLA, A SEMINOLE LEADER., from *History of the Indian Tribes of North America*
 about 1842, hand-colored lithograph on paper, 19 5/8 x 13 3/8 inches
 Smithsonian American Art Museum, Museum purchase
141. Currier and Ives, publisher, Frances Flora Bond Palmer (1812 – 1876)
Morning in the Woods, 1852
 hand-colored lithograph on paper, 13 7/8 x 20 1/4 inches
 Smithsonian American Art Museum, Transfer from the National Museum
 of American History, Division of Graphic Arts, Smithsonian Institution
142. Burke and Atwell Press Photographers, Chicago
Col. William F. Cody, Buffalo Bill, Seated Next to Saddle, about 1896
 black and white photograph, 9 3/4 x 12 inches
 Buffalo Bill Historical Center, Cody, WY, Finley A. Goodman Collection
143. Richard K. Fox, born Belfast, Ireland 1846, died Red Bank, NJ 1922
Annie Oakley, 1899
 photomechanical print, halftone, 13 13/16 x 9 1/2 inches
 Library of Congress, Prints and Photographs Division
144. Unidentified artist
Worker Using a Jigging Machine at the Colt Factory, 1850s
 photo reproduction, 9 x 11 inches
 Museum of Connecticut History at the Connecticut State Library, Hartford
145. Unidentified artist
Worker Using a Deburring Machine at the Colt Factory, 1850s
 photo reproduction, 9 x 11 inches
 Museum of Connecticut History at the Connecticut State Library, Hartford
146. Unidentified artist
Martha Maxwell, "The Colorado Huntress," 1870s
 photo reproduction, 9 x 11 inches
 Courtesy, History Colorado



147. Unidentified artist
Martha Maxwell, "The Colorado Huntress," 1870s
 photo reproduction, 9 x 11 inches
 Courtesy, History Colorado



148. Horace Greeley (1811 – 1872), et al.
The Great Industries of the United States
 (Chicago and Cincinnati: J. B. Burr, Hyde, and Co., 1872)
 book, open to p. 947, The Gatling Gun
 Private collection



149. American Arms Co., Boston MA.
 Breechloading Repeater Pistol, .32R7, 1866–1878
 wood, brass, and steel, 5.25 inches overall length
 Buffalo Bill Historical Center, Cody, WY; Gift of Olin Corporation, Winchester Arms Collection



150. Colt's Patent Fire Arms Manufacturing Company
Colt-Burgess Lever Action Rifle presented to William F. "Buffalo Bill" Cody,
 .44-40 caliber, serial no. 285, 1883
 steel and hardwood, 4 1/2 x 42 x 1 1/2 inches
 Autry National Center, Los Angeles



151. Colt's Patent Fire Arms Manufacturing Company
Third Model Dragoon Revolver, .44 caliber, serial no. 10222, 1851
 steel and walnut, height 1 3/4 inches, width 4 1/2 inches, depth 5 1/2 inches
 Autry National Center, Los Angeles



152. John Pearson
Prototype Revolving Pocket Pistol, .33 caliber, 1835
 steel and wood, overall length 7 3/4 inches, barrel length 3 11/16 inches
 Wadsworth Atheneum Museum of Art, Hartford, CT, Bequest of Elizabeth Hart Jarvis Colt



153. Colt's Patent Fire Arms Manufacturing Company
Model 1851 Navy Revolver presented to James Butler "Wild Bill" Hickok,
 .36 caliber, serial no. 138824E, 1863
 steel and ivory, 5 1/2 x 13 x 1 3/4 inches
 Autry National Center, Los Angeles



Meteorology

154. Frederic Edwin Church, born Hartford, CT 1826, died New York City 1900
Landscape with Sunset, 1860 – 1870
 oil and graphite on paperboard, 8 15/16 x 11 inches
 Cooper-Hewitt, National Design Museum, Smithsonian Institution,
 Gift of Louis P. Church



155. Frederic Edwin Church, born Hartford, CT 1826, died New York City 1900
Sunset: Color Effects, 1865
 oil on paperboard, 11 15/16 x 20 inches
 Cooper Hewitt, National Design Museum, Smithsonian Institution,
 Gift of Louis P. Church



156. Jasper F. Cropsey, born Rossville, NY 1823, died Hastings-on-Hudson, NY 1900
Cloud Study, June 22, 1850
pencil, white gouache, and gray wash on paper, 6 7/8 x 5 inches
Newington-Cropsey Foundation, Hastings-on-Hudson, NY



157. Russell Smith, born Glasgow, Scotland 1812, died Glenside, PA 1896
Cumulus Cloud after a Summer Storm, about 1850
oil on paper, 7 7/8 x 11 3/8 inches
Private collection



158. Russell Smith, born Glasgow, Scotland 1812, died Glenside, PA 1896
Storm Passing Off to the South, about 1850
oil on paper, 7 7/8 x 11 3/4 inches
Private collection



159. Russell Smith, born Glasgow, Scotland 1812, died Glenside, PA 1896
Sunset at the Seashore, about 1850
oil on paper, 8 x 12 inches
Private collection



160. Unidentified maker
Patent Model for H. M. Wood's Windmill, 1879
U.S. Patent No. 222340
metal and wood, about 9 1/2 x 12 x 12 inches
Smithsonian Institution, National Museum of American History, Kenneth E. Behring Center



161. Robert S. Duncanson, born New York State, 1821, died Detroit, MI 1872
Landscape with Rainbow, 1859
oil on canvas, 30 x 52 1/4 inches
Smithsonian American Art Museum, Gift of Leonard and Paula Granoff

