

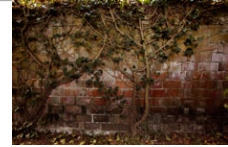
ANNIE LEIBOVITZ PILGRIMAGE

JANUARY 20—MAY 20, 2012

Pete Seeger's workroom, Cold Spring, New York, 2010



Wall at Julia Margaret Cameron's house, Dimbola Lodge, Freshwater Bay, Isle of Wight, England, 2010



Julia Margaret Cameron's lens, National Media Museum, Bradford, West Yorkshire, England, 2010



Plaster model of seated Lincoln in Daniel Chester French's studio, Chesterwood, Stockbridge, Massachusetts, 2010



Casts of Daniel Chester French's hands made as models for Lincoln Memorial, Chesterwood, Stockbridge, Massachusetts, 2010



Glass negative of multiple-lens portrait of Abraham Lincoln, National Archives, College Park, Maryland, 2011



The gloves that Abraham Lincoln wore the night he was assassinated, Abraham Lincoln Presidential Library and Museum, Springfield, Illinois, 2011



The hat that Abraham Lincoln wore the night he was assassinated, Smithsonian National Museum of American History, Washington, D.C., 2011



Devil's Den, Gettysburg National Military Park, Gettysburg, Pennsylvania, 2010



ANNIE LEIBOVITZ PILGRIMAGE

JANUARY 20—MAY 20, 2012

Jacob Lott's farm, East Cavalry Field, Gettysburg National Military Park, Gettysburg, Pennsylvania, 2010



Eleanor Roosevelt's sleeping porch, Val-Kill Cottage, Hyde Park, New York, 2010



Marian Anderson's concert gown, Danbury Museum and Historical Society, Danbury, Connecticut, 2010



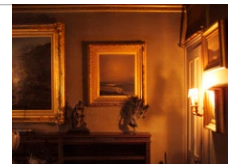
Emily Dickinson's only surviving dress, Amherst Historical Society, Amherst, Massachusetts, 2010



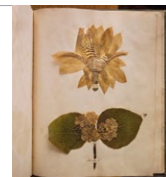
Vitrine with stuffed birds in Mabel Loomis Todd Parlor, Amherst Historical Society, Amherst, Massachusetts, 2010



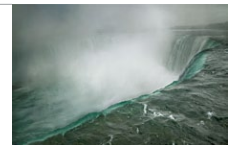
The home of Emily Dickinson's brother, Austin, The Evergreens, Amherst, Massachusetts, 2009



Emily Dickinson's herbarium, Houghton Library, Harvard University, Cambridge, Massachusetts, 2010



Niagara Falls, Ontario, Canada, 2009



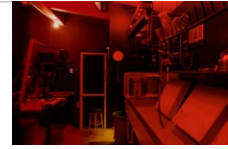
Ansel Adams's darkroom, Carmel, California, 2010



ANNIE LEIBOVITZ PILGRIMAGE

JANUARY 20—MAY 20, 2012

Ansel Adams's darkroom, Carmel, California, 2010



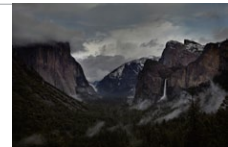
Yosemite Valley, California, 2010



Yosemite Valley, California, 2010



Yosemite Valley, California, 2011



Sigmund Freud's library, Freud Museum, 20 Maresfield Gardens, London, 2009



Sigmund Freud's couch, Freud Museum, 20 Maresfield Gardens, London, 2009



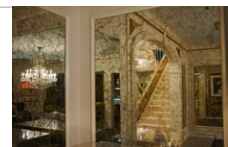
Elvis Presley's TV, Graceland, Memphis, Tennessee, 2011



Elvis Presley's 1957 Harley-Davidson Hydra Glide motorcycle, Graceland, Memphis, Tennessee, 2011



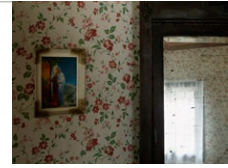
Stairs to the private quarters, Graceland, Memphis, Tennessee, 2010



ANNIE LEIBOVITZ PILGRIMAGE

JANUARY 20—MAY 20, 2012

Elvis Presley's birthplace, Tupelo, Mississippi, 2010



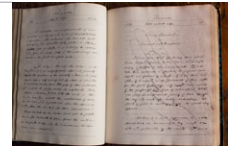
Presley family gravesite, Meditation Garden, Graceland, Memphis, Tennessee, 2010



May Alcott's drawing on her bedroom wall, Orchard House, Concord, Massachusetts, 2010



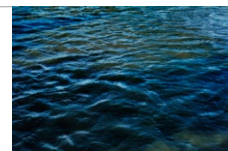
Bronson Alcott's journal, Houghton Library, Harvard University, Cambridge, Massachusetts, 2010



Alcott dolls, Orchard House, Concord, Massachusetts, 2011



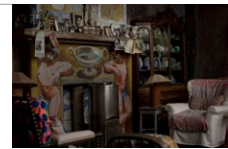
The River Ouse, Rodmell, East Sussex, England, 2009



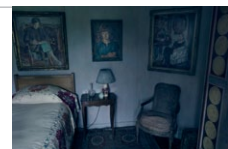
Virginia Woolf's writing desk, Monks House, East Sussex, England, 2009



The Studio, Charleston Farmhouse, Firle, Lewes, East Sussex, England, 2010



Vanessa Bell's bedroom, Charleston Farmhouse, Firle, Lewes, East Sussex, England, 2010



ANNIE LEIBOVITZ PILGRIMAGE JANUARY 20—MAY 20, 2012

Martha Graham Center of Contemporary Dance warehouse,
Yonkers, New York, 2010



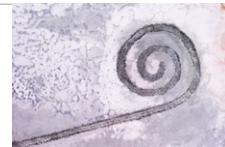
Robert Smithson's *Spiral Jetty*, Rozel Point, Great Salt Lake,
Utah, 2010



Robert Smithson's *Spiral Jetty*, Rozel Point, Great Salt Lake,
Utah, 2010



Robert Smithson's *Spiral Jetty*, Rozel Point, Great Salt Lake,
Utah, 2010



Bird specimen collected by Charles Darwin during the voyage of
the *Beagle*, Natural History Museum at Tring, Hertfordshire,
England, 2010



Skeleton of a pigeon studied by Charles Darwin, Natural History
Museum at Tring, Hertfordshire, England, 2010



John Muir botanical specimen, John Muir National Historic Site,
Martinez, California, 2011



John Muir botanical specimen, *Amelina Licharotii*, John Muir
National Historic Site, Martinez, California, 2011



Thomas Jefferson's vegetable garden, Monticello, Charlottesville,
Virginia, 2010



ANNIE LEIBOVITZ PILGRIMAGE

JANUARY 20—MAY 20, 2012

Lewis and Clark's compass, Smithsonian National Museum of American History, Washington, D.C., 2011



Carolina lima beans, Monticello, Charlottesville, Virginia, 2010



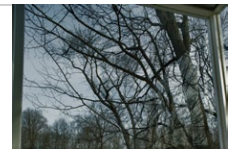
Sweet potato, Monticello, Charlottesville, Virginia, 2010



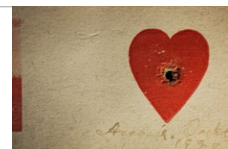
Thoreau's bed, Concord Museum, Concord, Massachusetts, 2010



Farnsworth House, Plano, Illinois, 2011



Annie Oakley's heart target, private collection, Los Angeles, California, 2010



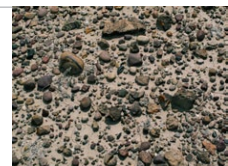
Annie Oakley's riding boots, Garst Museum and the Darke County Historical Society, Greenville, Ohio, 2011



Old Faithful, Yellowstone National Park, Wyoming, 2010



The Black Place, northwestern New Mexico, 2011



ANNIE LEIBOVITZ PILGRIMAGE JANUARY 20—MAY 20, 2012

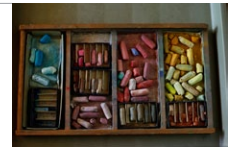
Door in adobe wall at Georgia O'Keeffe's home in Abiquiu,
New Mexico, 2011



Georgia O'Keeffe's bed, Abiquiu, New Mexico, 2010



Georgia O'Keeffe's pastels, Georgia O'Keeffe Museum and Research
Center, Santa Fe, New Mexico, 2010



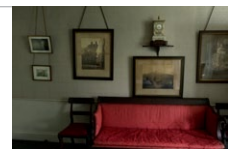
Red hill, Ghost Ranch, New Mexico, 2010



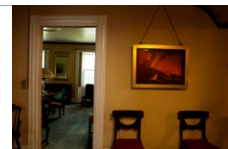
Rattlesnake skeleton in Georgia O'Keeffe's living room, Abiquiu,
New Mexico, 2010



Ralph Waldo Emerson's dining room, Emerson House, Concord,
Massachusetts, 2010



Ralph Waldo Emerson's parlor, Emerson House, Concord,
Massachusetts, 2010



Ralph Waldo Emerson's hat, Emerson House, Concord,
Massachusetts, 2010



Ralph Waldo Emerson's drawer, Concord Museum, Concord,
Massachusetts, 2010

